



INTERLINK

CONNECTING ARKANSAS'S PUBLIC EDUCATION RETIREES

Volume 65, Number 2 | Parkview Towers • 1200 Commerce Street Ste 103 • Little Rock, AR 72202 • 501-375-2958 | Winter 2022

Submit your photos, news and content ideas by January 15 for inclusion in the next issue of this newsletter.

Address changes and corrections:
office_arta@att.net
501-375-2958

HAPPY HOLIDAYS

The ARTA office will be closed December 22, 2022 through January 3, 2023 for a holiday break.

Please leave us a message or send us an email to be returned in the new year!



Find and like us on Facebook to see travel photos, member news and upcoming event announcements.

ARTA Members Serve Local Communities

ARTA affiliates, known as units, are groups of public education retirees within local communities throughout the state. These local units provide opportunities for members to network, socialize and serve with others in their area.

Each unit is encouraged to have at least one service project each year. Such projects should be open to all members and should benefit the community in some way.

During the 2020-21 membership year, many units suspended meeting and limited service opportunities due to COVID19. In 2021-2022, units were able to resume their established projects as well as to organize some unique new projects.

The **Bradley County Retired Teachers and Employees Association** hosted a silent auction to replenish their scholarship fund. Members donated items, promoted the event, and managed the auction. They raised more than \$1,700 to provide scholarships to students pursuing a career in education.

The **Franklin County Retired School Employees Association** expanded their CUDDLES FOR COMFORT project. In 2021, members made fleece blankets at home during the months they did not meet. The blankets were distributed to patients in local nursing homes and children's hospitals. In 2022, the project also included hospice patients and recipients recommended by local school districts.

The **Garland County Retired Teachers Association** continued their sponsorship of The CALL, a local non-profit that aids foster families. The GCRTA members brought diapers, wipes and clothes to each meeting throughout the year, as well as monetary gifts during the holidays.

The **Little River County Retired Teachers and Employees** arranged a Christmas tour of a local museum for district fourth-graders. Members enjoyed planning and staffing the event, as

well as seeing the way the children had grown since their first visit as kindergartners.

The **Little Rock Retired Teachers** were able to repeat their annual project, Shoeboxes for Vets. Participating members filled shoe boxes with small personal items and gift-wrapped them. The boxes were collected and delivered to the local VA hospital for distribution. The recipients enjoyed receiving the gifts and appreciated the thoughtful items that were included.

The **Logan County Retired Teachers Association** continued their support of various youth organizations. They made donations to three Boys and Girls Clubs and to a student clothes closet at a local school district. Representatives of these organizations regularly share information with the group about the financial and social-emotional impact of their support.

The **Yell County Retired Teachers Association** hosted a memorial service for community members, school personnel and YCRTA members lost to COVID19 in 2020-2021. Members voted to set aside their monthly meeting to honor those individuals. They then made personal contacts, gathered materials for the presentation, decorated and publicized the event. The majority of the 19 individuals honored at the memorial were Yell County school personnel.

These are just a few examples of the ways that local unit members serve their communities. Whether it be with ongoing donations and support, in response to a request for assistance, or in recognition of a unique need or opportunity, all local units are an important resource. Their ability to gather and organize members to serve others is truly remarkable, as is each individual member who continues to serve.



Message from the President

Developing Leaders

Dear ARTA Members,

How do we develop and encourage potential leaders? Here are some thoughts.

1. Put every member on a committee. You could have monthly committees that plan the program, do decorations, and plan a menu if necessary. This will give members a sense of belonging, involvement and decision making. Give them time to meet and learn more about each other. Let each committee choose their own chairperson.
2. Give the committees an opportunity to make decisions. Monitor but don't micromanage.
3. Delegate and don't try to do everything yourself. Once you give them a task, accept the results. If it's not the way you would have done it, so what? Maybe a fresh look is good.
4. Accept productive change.
5. Many folks are afraid of public speaking. Remember these are your friends. Give members a chance to express themselves.
6. Always model leadership behavior. Know Parliamentary Procedures. Use written agendas and/or scripts and help your chairpersons make agendas.
7. Listen more than talk. As Judge Judy says, "That's why you have two ears and one mouth".
8. Be courageous and don't be afraid to take risks individually and as a group.
9. Remember that something that encourages and sustains leaders is the formation of relationships.
10. Mentor each other.
11. Know that you have a support system within your unit and with ARTA. You don't have to go it alone.
12. Share your knowledge and experience.
13. Remember this analogy: The mediocre teacher tells. The good teacher explains, and the superior teacher demonstrates. Albert Schweitzer said "Example is not the main thing in influencing others. It is the only thing".
14. Make sure to take the time to rest, reenergize and recharge. If you don't take care of yourself, you can't help others.
15. It is important that you give members enough information and resources to make productive decisions. John Maxwell says "Pessimists complain about the weather, optimists expect it to change, and leaders adjust the sails".



Dr. Diana Glaze
ARTA President



Important Contact Information

Arkansas Retired Teachers Association

Inside Pulaski County: 501-375-2958

Toll Free (Nationwide): 1-888-929-0955

E-mail: office_arta@att.net

www.artanow.com

Arkansas Teacher Retirement System Retirement Benefits and Checks

501-682-1517

E-mail: info@artsr.gov

www.artsr.gov

Arkansas Employee Benefits Division (Health and Life Insurance)

Inside Pulaski County: 501-682-9656

Toll Free (Nationwide): 1-877-815-1017

E-mail: EBD@arkansas.gov

www.arbenefits.org

Long Term Care Insurance Cancer/Heart/Stroke Dental & Vision Insurance Medicare Products

Mary Alice Hughes

Lisa Bamburg

501-988-2726

Email: info@ia-office.com

www.ia-office.com

Matt Hughes

479-967-1339

Email: info@matthughesinsurance.com

www.matthughesinsurance.com

Delta Dental Insurance

501-988-2726

www.deltadentalar.com

The INTERLINK is published by
Arkansas Retired Teachers Association
1200 Commerce St Ste 103
Little Rock, AR 72202

Diana Glaze President
Catherine Pendergrass President-elect
Mark Gammill Vice President
Cindy Cole Secretary
Donna Morey Executive Director
Tammy Gray Communications
Linda Powell Office Manager

Message from the Executive Director

ARTA—On the Right Path

As each of us prepares for the holiday season, I feel joyful that ARTA is getting back on the right path, which is the title of the ARTA 2021-22 Annual Report. A big thanks to Tammy Gray for compiling the document and to the local units who turned in their reports to be included. We know it has been difficult to meet and ask members for their service hours. Of the locals who reported to ARTA, close to \$4 Million in volunteer time was donated to local communities. A special shout out to those individuals who reported more than 1,000 volunteer hours. Close to \$40,000 in cash and items were donated by local units. We know that this is not even close to the actual volunteer hours and donations from ARTA members during the year. It is still very impressive. We are truly following Dr. Ethel Percy Andrus' motto, "To serve not to be served."

One of the ways ARTA gives back is found on pages 6-7, where we highlight the 12 recipients of the 2022 Parsons-Burnett Grants. Each received \$2,000 to further their education as they serve the students of Arkansas's public schools. This year we gave two of those awards to classified public school employees who are working on teaching certificates. Thank you, ARTA members for your generosity in giving back to those working with students in our public schools. We now have 124 members who are having an additional deduction taken from their pension benefit checks to help fund those grants. No one even misses the minimum deduction of \$2 per month, especially after receiving the guaranteed 3% COLA each year. Please consider becoming a Life Continuing or Continuing Plus member today. (You can use the form on the back of this INTERLINK.)

Local units are reactivating in Baxter County and Lawrence County. If you live in those areas, please consider becoming involved in your community group. I am so happy to visit locals in person again. This fall it has been a joy to visit with members in Baxter,

Benton, Chicot, Crawford, Howard, Johnson, Pulaski, Searcy and Sebastian Counties, as well as at the Area 4 meeting in Hope and the Area 8 meeting in Cabot. Meetings are listed on the ARTA website and the ARTA Facebook page. Send your yearbooks or programs if you would like your meetings to be included.



The 2023 General Assembly of the Arkansas Legislature will convene in January. We will watch closely the Joint Legislative Committee on Social Security and Retirement. Make sure you are signed up to receive the Whispers email, where we will share the name and contact information for the members of the Joint Committee. It is important that we establish relationships with those members. If you personally know any of them, please let me and/or the ARTA Legislative Committee know - relationships matter and if you taught one of those folks, it really matters!

ARTA will also monitor other legislative committees for issues that affect public education retirees. It is vital that the ARTA office have good cellphone numbers and current email addresses for our members, especially if we need to ask you to contact your elected officials or to come to the

Capitol. The easiest way to make sure we have this information is to sign up through www.mycallnow.com (see page 5).

Last but not least, ARTA travel is back! We have added some wonderful trips that are safe and hurry free. Look for bus trips in August to Mackinac Island and in late September to Colorado. The newest Collette trips added are a land-only trip to Alaska in July and a fall foliage trip – Postcards from Vermont – in October. Book early and relax. ARTA has your back!

Donna

REMINDER: AR Benefits Retiree Coverage

If you will be retiring at the end of the year, you must be on the Public School Employees Plan on your last day of employment AND you must be eligible to begin drawing your retirement from ATRS to enroll in the AR Benefits PSE retiree health insurance plan.

Eligible retirees can enroll in retiree coverage **one** time. If you decline coverage, you will have to take multiple steps to apply later. If you drop coverage, you will **not** be able to rejoin later.

Listen Up!

*Submitted by Cindy Cole, Committee Chair
ARTA Community Service and Public Relations*

Mama always said, “Be quiet and listen. Do you know who you are talking to? Think for yourself. Stand up straight. Look me in the eye when you speak to me.” Our mamas were just preparing us to become respectful and effective communicators.

Listen? Listening may be the most important skill of a good communicator. The first step, like Mama said, is to be quiet and listen. Be interested with the intent of truly understanding. Be patient and empathetic. Ask questions to determine the needs, concerns, and interests of your audience.

Remember to “think for yourself” as you listen. Be aware of who is giving information and how they’re trying to influence you in a way to think and/or act. If we are truly good listeners and critical thinkers, we will know our audience.

Now that you know “who you are talking to,” you can address those needs, concerns, and interests. This can be communicated orally or in writing. When speaking to a group, we must be prepared in our words and our actions. Body language can be positive or negative. Mama’s instructions to “stand up straight and look me in the eye” will be easily accomplished if you are sincere with your message.

Written messages can be just as effective. The challenge may be in determining the means of delivery. Again, “know who you are talking to.” Survey the members to know their preference of receiving information by texts, phone calls, emails, social media, letters, or newsletters. Information must be received to be effective, and effective communication is vital to every organization. Mama said.

Ten Commandments of Listening

By Dr. Diana Glaze

1. Stop talking!
2. Put the speaker at ease.
3. Show others that you want to listen.
4. Remove distractions.
5. Empathize with others.
6. Be patient.
7. Hold your temper.
8. Avoid arguments and criticism.
9. Ask questions.
10. Stop talking!

For more information and activities to help you be a better listener and communicator, visit <https://www.artanow.com/tempdocs>.

Over-the-Counter Hearing Aids

Over-the-counter (OTC) hearing aids are now available in the U.S. without a prescription. This long-awaited change is expected to make the devices more accessible and more affordable. However, OTC hearing aids are not for everyone.

Who is a Good Candidate for OTC Hearing Aids?

OTC hearing aids are intended for adults with mild to moderate hearing loss. You may still want to consult a hearing professional to determine if OTC hearing aids will address your needs.

What Types of Hearing Aids are Available?

Traditional hearing aids are available in five main styles. You may want to consult a hearing professional to help you find the best type of device, since fit, comfort and function are key to successfully adapting to wearing hearing aids.

What to Look for in an OTC Hearing Aid

In addition to type, fit and features, you will want to consider the ease of ownership. Is customer support available?

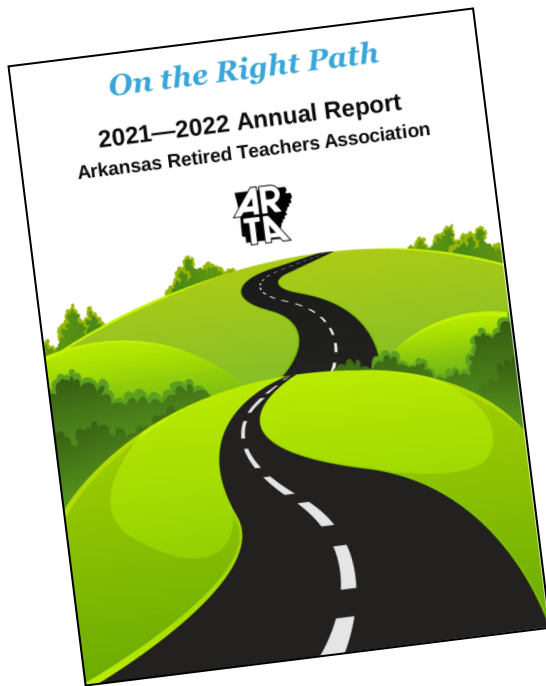
What is the return policy? It takes up to a month to acclimate to hearing aids, and it is not uncommon to try two or three sets before settling on the right ones for you.

What are the details of the warranty? Read the fine print to see what is covered and for how long.

OTC hearing aids promise to be a great option for some people. Just be sure to do your research and consider enlisting the help of a hearing professional if your hearing loss is very severe.

Wirth, Jennifer. (2022, October 26). *What to look for in over-the-counter hearing aids, according to experts*. Forbes. Retrieved October 27, 2022, from <https://www.forbes.com/health/hearing-aids/what-to-look-for-otc-hearing-aids/>

ARTANews Annual Report for 2021-2022



The ARTA Annual Report for 2021-2022 is now available. Based on information from board meetings, the ARTA staff and local unit annual reports, it is a summary of the challenges we faced and the accomplishments we made during the reporting period.

ARTA milestones include the formal adoption of two enhanced membership types, the expansion of the Parsons-Burnett Scholarship Grants, and the return to an in-person Annual ARTA State Convention.

Local highlights include the resilience of local units as they returned to in-person meetings and the remarkable commitment of local members to engaging in meaningful service to others.

In addition to the community service projects mentioned in the front-page article of this INTERLINK, local units also reported \$39,901 in donations of cash and goods and 132,222 volunteer hours. The dollar value of these hours is \$3,960,049!

Those individuals who reported more than 1,000 hours of volunteer service are listed on page 10.

A copy of the full report, which can be shared with members and prospects, is available at www.artanow.com/resources.

Sign Up Now for Legislative Updates

The Arkansas Legislature will convene on January 9, 2023.

The Joint Committee on Public Retirement and Social Security Programs regularly meets on Monday mornings. ARTA representatives attend these meetings and report back on legislation of interest. They may also attend other committee meetings when appropriate.

Most of these meetings are also live streamed for those who would like to observe. They can be accessed from the legislative website at www.arkleg.state.ar.us.

ARTA members interested in the legislative session can also stay informed by signing up for legislative alerts from ARTA. These alerts will be used to recap the committee meeting, track relevant legislation, and give specific action steps for members to take if needed. Instructions are to the right.

Contact information for members of the Joint Committee will be available once committee assignments are made. Members who are constituents of committee members may be asked to make personal contact during the session.

As always, all ARTA members are encouraged to contact their elected officials at any time. Endeavor to form cordial relationships with them now so that you can confidently and effectively share your thoughts with them on issues of importance during the legislative session.

One Call Now Self-Update Portal

1. Sign in or sign up to use the One Call Self-Update Portal at www.mycallnow.com.

2. Edit or add your contact information and choose how you would like to receive messages.

3. Subscribe to receive Legislative Alerts. Check Text Opt-in if you prefer to receive alerts via text.

4. Save and log out.

2022 Parsons-Burnett Grant Recipients

ARTA awarded 12 Parsons-Burnett Grants in 2022. Ten certified applicants received the funds to help further their own education. Two classified applicants received the funds to support their goal of becoming a licensed educator.

Grant applications were reviewed and scored by two committees of ARTA members. Special thanks to all who participated in this rigorous process to select the most qualified applicants.

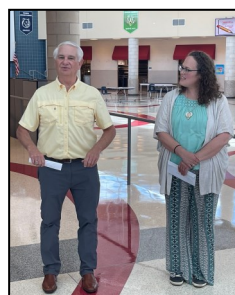
The awards were presented to recipients by ARTA representatives at local district meetings. Special thanks to these individuals for personifying ARTA's commitment to quality public education in Arkansas.

The Parsons-Burnett Grants are funded by contributions from ARTA members. Thanks to this generous support, grants of \$2,000 each were awarded to the following 12 individuals.



Megan Callaway
Instructional Paraprofessional
Bryant Public Schools
Presented by Emilie Monk (center) and
Donna Morey (right)

"... Any additional scholarships to help me get one semester closer to being in my own classroom will be a blessing!"



Valerie Dunn
Special Education
Kirksey Middle School, Rogers
Presented by David Caldwell (left)

"... a desire to learn and be as effective and innovative as I can in teaching students with disabilities."



Rachel Colananni
School Counselor
Siloam Springs High School
Presented by Dr. Clarice Cox (left)

"... pursuing a masters of science in school counseling from UCA. I want to be better so I can do better for my students."



Betsy Kryeziu
Art Teacher
Har-Ber High School, Springdale
Presented by Dr. Clarice Cox (left)

"As I encourage each student to find an outlet in which they can create art that is meaningful to them, I will be doing the same in continuing to learn different methods and pedagogies of art education."



Jordan Drye
Fourth Grade Teacher
Taylor Elementary, White Hall
Presented by Betty Cook (left)

"... I choose to forge ahead in order to make a difference. I choose to grow."



Courtney Maag
Second Grade Teacher
Southside Elementary School
Presented by Alice Simmons (right)

"Personally, if I commit to something I want to give it all of my effort and attention. Eventually, it is my goal to be in a leadership role at Southside."

2022 Parsons-Burnett Grant Recipients



Lance Mabrey
 Gifted & Talented Coordinator
 Rector School District
 Presented by Donna Morey (right)

"I want our school and students to be successful, and if I can help with this...then that is exactly what I should do."



Michael Smith
 Teacher/Coach
 Siloam Springs School District

"Considered to be a teacher that uses "non-traditional" teaching methods, is something that I take extreme pride in."



Adrienne McElyea
 Gifted & Talented Education
 Benton School District
 Presented by Dr. Diana Glaze (right)

"... I am currently enrolled in the MSE program at ASU for gifted education. I want to obtain this degree in order to better serve advanced learners in my classroom.."



Tiffany Taylor
 Teacher/Coach
 Rogers Public Schools
 Presented by David Cauldwell

"Going back for a PhD at age 44 is perhaps unique. I would love for this to be the start of a career in shifting science education in all classrooms, and especially indigenous classrooms."



Megan Parker
 Teacher Clerk
 Jonesboro Public Schools
 Presented by Mary Ann Hodges (right)

"I want to be with these children every day...to teach them and learn with them and be the person they look forward to spending their days with."



Elizabeth Qualls
 Elementary School Counselor
 Buffalo Island Central Schools
 Presented by Mary Ann Hodges (left)

"We are a rural district, and have not have had any applications for elementary school counseling the last few years...I stepped in to serve even though it meant I would have to return to school for additional certification."

YES! I want to make a one-time contribution to the ARTA Parsons-Burnett Scholarship Fund. I understand that my non-tax deductible contribution will be used to fund scholarship grants for practicing educators in Arkansas to further their education.

Name of Individual or Group _____

Address _____

City _____

State _____ ZIP _____

Phone _____

Email _____

Amount Enclosed \$ _____

Please make checks payable to ARTA Scholarship Fund. Detach and mail this form with your check to ARTA, 1200 Commerce Suite 103, Little Rock, AR 72012.

Member News

Area I

Approximately 80 members from Crawford, Franklin, Johnson, Logan and Sebastian Counties attended a joint meeting in September to hear about changes to their insurance programs for 2023.



Approximately 37 members attended a similar meeting hosted by the **Yell County RTA**.



The **Fort Smith RTA** had an outstanding number of attendees at their first meeting of the year. They are looking forward to having this level of participation from members all year.



The **Johnson County RTA** presented the Clarksville School District with a donation for their Backpack Program.

The Backpack Program helps bridge the gap between school meals. From lunch one day to breakfast the next and through the weekend, this program provides nutritious meals to children with food insecurities in the school district.

Donations were also presented to Lamar Elementary School, Lamar Middle School, Oak School District, and Westside Elementary School.

Pictured from left to right are Terri Stumbaugh, Elementary Nurse; Debbie Johnson, JCRTA President; and Andrea Edgemon, District Social Worker.



Submit your photos, news and story ideas by January 15 for inclusion in the next issue.

Area II

Newly-elected officers of the **Baxter County RTA** met to organize and plan programs for the year after a long COVID 19 hiatus.

Pictured from left to right are Barbara Horton; Jeanne Bushey; Marsha Daniel; and Carol Wegerer.



Fulton, Independence, Izard, Lawrence, Sharp and Stone Counties held a joint meeting for members to learn more about changes to insurance coming in 2023. Thirty-seven members attended.



The **Independence County RTA** welcomed former student Michelle Mobley, Independence County Extension Agent at their October meeting.

Michelle did a great job explaining the services offered by her office. Members especially appreciated the opportunity to ask questions and the feeling of fellowship the meeting generated.



Area III

The **Craighead County RTA** enjoyed an October program that included a speaker, lunch and collection of donations.

One hundred pounds of food and \$430 in cash were collected for the Helping Neighbors Food Pantry.



Find and like us on Facebook to see more member photos and local news.

Member News

Area V

Members of the **Ashley County RTA** visited the Greater Crossett Area Food Pantry to present a donation. Contributions are made at their monthly meetings for distribution in the Crossett and Hamburg communities.

Pictured from left to right are Lucille Smith, ACRTA President; Martha Simpson; Margaret Holder; Baker Coulter; Judy Reves; Charlotte Hollimon; and Delores Skender.



Pictured at right, members of the **Saline County RTA** (Area 6) gathered to visit and write postcards to new retirees and less active members.

Area VI

Members of the **Faulkner County RTA** presented a monetary donation to Crystal Certain. Crystal, an art teacher at Conway High School, is in charge of the Food Pantry.

Pictured from left to right are Judy McKnight; Jennie Webb; Elizabeth Humphrey; Crystal Certain; Florene Phipps; & Carol Powers.



The following individuals reported contributions of 1,000+ hours of service to their communities in 2021-2022

Colleen Atkins, Ft. Smith
Suella Bratton, Franklin County
Carolyn Brooks, Washington County
Glenetta Burks, Bradley County
Janet Cheatham, Yell County
Willye Cooper-Martin, Local Member
Kay Ekey, Garland County
Glenda Ezell, Logan County
Lilus Franklin, Pope County
Pat Freeman, Local Member
Judy Gibson, Bradley County
Doris Hagen, Greene County

Virginia Helm, Union County
Ellen Holmes, Miller County
Elouise Hudson,
Little Rock Retired Teachers
Golden Lloyd, Garland County
Cordia Metcalf, Miller County
Debby Moody, Izard County
Paulette Parker, Greene County
Diane Parnell, Bradley County
Cissie Pendergrass, Franklin County
Jonalyn Reep, Bradley County
Charles Rush, Local Member
Susan Simmons, Little River County

Joyce Smith, Bradley County
Patsy Smith, Franklin County
Debby Smyth, Franklin County
Phyllis Stedman, Local Member
Cherie Stevenson, Ft. Smith
Carolyn Stokes, Garland County
Charles Tadlock, Grant County
Katherine Teeter, Pope County
Bruce Vick, Ft. Smith
Kendall Walden, Greene County
Glenda Walker, Miller County
Karen Williams, Ft. Smith

Area VII

The **Washington County RTA** is pleased to report that it will continue their scholarship support for Meredith Boogaart, who has maintained a perfect GPA while involved in numerous activities.



Area VIII

Area VIII hosted a meeting for area members in September. The program included speakers from ATRS, ARTA and the Cabot School District. Members enjoyed the in-person conference, which was earlier postponed due to COVID 19.



Find and like us on Facebook to see more member photos and local news.

Welcome New Life/LC* Members

Ashley County
Cheryl D. Whaley

Benton County
Debbie L. Chamberlin
Barbara F. Griffith
Linda McMillan

Bradley County
Jeanette Hooper
Linda S. McDiarmid

Clark County
Angela G. Middleton

Columbia County
Ellora Hicks

Conway County
Windell Neal Chism

Craighead County
Candace L. Brewer
Donna R. Lackey
Pamela Muckensturm

Crittenden County
Timothy L. Taylor*

Faulkner County
Margaret Grimes
Mary E. Tate

Garland County
Gina Pruett
Eardie J. Stadler

Howard County
David Keith Fricks
Sharla J Fricks

Jefferson County
Linda Callaway

Little River County
Linda Walker

Logan County
Agnes P. Mathews

Lonoke County
Barbara Garza*
Loveida Ingram*
Dawn Jackson*
Pam Sowell*
Jeanette Wood*

Madison County
Stacey M. Holt

Monroe County
Helen Baldwin

Montgomery County
Carol S. Patterson

Nevada County
Amanda Cooley

Ouachita County
Jo Ann Newcomb

Pulaski County
Carolyn Alexander
Cathy Cagle*
Carol S. Heavin*
Anita Brock Jones

Sebastian County
Suzanne L. Bethell
Tracy Jean. Cooper

Union County
Tami D. Philyaw
Janice Marie Roscoe

Van Buren County
Roger Sweatt
Marla F. Vest

Washington County
Jacque F. Allen
Cindy Banks
Deborah O. Goff
Jo Ruth Strange

White County
Jennifer L. Mabry

Out of State
Susan Blanchard
Cynthia L. Roach

*** Life Continuing**
members are Life members who have elected to have additional dues deducted from their monthly benefit check.

These additional dues are used to support the Parsons-Burnett Scholarship Grant Program.

ARTA Travel Policy

ARTA members are invited to participate in safe, affordable group travel. Guests are welcome but must travel with an ARTA member. Whenever possible, ARTA trips are escorted by a member of the ARTA staff.

BOOK EARLY—ARTA partners with Collette Travel to offer customized travel opportunities for our members. Plans include a reserved block of airline seats for each trip. A deposit is required to reserve your seat and to ensure you receive any advertised price reduction. Reservations made after the seating block is filled, or after the booking date has passed, are based on availability and are subject to a price increase. Prices include round trip airfare from Little Rock National Airport. Departures from alternate gateways can be requested when booking.

BOOK ONLINE—Collette Travel utilizes an online reservation booking system. Go to www.artanow.com/travel and click on each trip for the customized web page with itinerary, pricing and online reservation form.

BOOK DIRECT—Collette Travel also offers a direct booking number for those who prefer to call. Call 1-800-581-8942 and refer to the ARTA booking number provided for each trip.

MOTORCOACH TRIPS—ARTA contracts with local companies for motor coach trips to U.S. destinations. These trips require a minimum number of travelers booked **with deposit**. Reservations are accepted on a first come-first serve basis.

For general questions about traveling with ARTA, contact Donna Morey at donna_arta@att.net or call the ARTA office at 501-375-2958.

Holland & Belgium Springtime River Cruise #1087793

April 25—May 3, 2023

Savor springtime in Holland and Belgium on a cruise that highlights the blooming Dutch tulip fields. Relax as you make your way along a route that includes Amsterdam, Arnhem, Middelburg, Ghent, Bruges, Antwerp, the Kinderdijk Windmills, and Keukenhof Gardens.

- ◆ For a detailed itinerary, pricing, and online reservation form, visit www.artanow.com/travel.
- ◆ For other questions contact Donna Morey at donna_arta@att.net or call the ARTA office at 501-375-2958.

Spotlight on Boston #1092390

June 1—5, 2023

Welcome to a city steeped in history and bursting with character. Incredibly charming and walkable, Boston is ready to greet you with cobblestone streets, stately brownstone buildings, distinct neighborhoods, art museums, shopping and more. Highlights include Faneuil Hall, Beacon Hill, Lexington & Concord, Buckman's Tavern, Harvard University, and your Choice on Tour: JFK Library or Hidden Gems of Boston Photo Tour.

- ◆ For a detailed itinerary, pricing, and online reservation form, visit www.artanow.com/travel.
- ◆ For other questions contact Donna Morey at donna_arta@att.net or call the ARTA office at 501-375-2958.

Alaska: America's Last Frontier #1112264

July 20—28, 2023

Your Alaskan adventure begins with a 3-night stay in Fairbanks—the “golden heart city” - where you will learn about life in Alaska, including its gold mining past, the Trans-Alaska Pipeline and dog mushing. Other experiences will include tours of Denali National Park, Tundra Wilderness, Talkeetna Village, and a musk ox farm. End your tour in Anchorage with a Glacier Cruise of Prince William Sound. **Save \$100 pp—Book by**

January 13, 2023

- ◆ For a detailed itinerary, pricing, and online reservation form, visit www.artanow.com/travel.
- ◆ For other questions contact Donna Morey at donna_arta@att.net or call the ARTA office at 501-375-2958.



Canyon Country

#1092393

September 8—15, 2023

Explore the famous canyons of the American West from Arizona to Las Vegas. Highlights include Kaibab National Forest, Grand Canyon, a Lake Powell Cruise, rafting on Horseshoe Bend, Bryce Canyon National Park, Zion National Park and the Las Vegas strip. **Save \$100 pp—Book by March 1, 2023**

- ♦ For a detailed itinerary, pricing, and online reservation form, visit www.artanow.com/travel.
- ♦ For other questions contact Donna Morey at donna_arta@att.net or call the ARTA office at 501-375-2958.



Cowboy Country
September 2022

Postcards from Vermont

#1130344

October 24—30, 2023

From winding roads in deep valleys and idyllic country homesteads, to a visual symphony of vibrant autumn leaves, there's no better place to experience a slice of classic New England life than in Vermont. Highlights include Quechee Gorge, Woodstock, Vermont Institute of Natural Science, Burlington, Lake Champlain Cruise, Maple Sugar House, Vermont's Scenic Route 100, Hildene, The Lincoln Family Home, Vermont Country Store, and Concord. **Save \$150 pp—Book by April 17, 2023**

- ♦ For a detailed itinerary, pricing, and online reservation form, visit www.artanow.com/travel.
- ♦ For other questions contact Donna Morey at donna_arta@att.net or call the ARTA office at 501-375-2958.



Danube River Cruise
September/October 2022

London & Paris Holiday

#1092387

November 29—December 7, 2023

From cosmopolitan London to romantic Paris, see the best of the world's most captivating cities decorated for the holiday season. To help make the most of your getaway, unpack just once in each city. Enjoy a leisurely-paced journey with plenty of time for independent exploration. Highlights include Big Ben, Buckingham Palace, Oxford, Blenheim Palace, Eurostar Train, Arc de Triomphe, Galeries Lafayette, Choice on Tour, Eiffel Tower Dinner, and Seine River Cruise. **Save \$350 pp—Book by May 30, 2023**

- ♦ For a detailed itinerary, pricing, and online reservation form, visit www.artanow.com/travel.
- ♦ For other questions contact Donna Morey at donna_arta@att.net or call the ARTA office at 501-375-2958.



Albuquerque Balloon Fiesta
October 2022



Find and like us on Facebook to for travel updates and photos from other scheduled trips.

In Memoriam

"These immortal dead who live again in minds made better by their presence"

Arkansas County

Regenia S. Earlywine
Beverly A. Fuller

Ashley County

Arthur G. Myers
Harry Tapp, Jr.

Baxter County

Glenna R. Cole
James W. Harris
Peggy J. Lenard
Linda S. Loden

Benton County

Shirley A. Beatty
Horace E. Bryant
Anita D. Buttram
James C. Dixon
Monica S. Eaton
Zelda L. Horton
Linda L. Lively
Samuel T. Oswalt
Michael J. Rapp
Carrol L. Richardson
Wanda J. Roe
Tennie T. Russell
Annette B. Savage
Berniece O. Wright

Boone County

Myrtle J. Breedlove
James H. Reed

Chicot County

John W. Dillard
Kenneth C. Shelton
Earnest Young, Jr.

Clark County

Troy W. Buck
Barbara A. Dickens
Lola W. Spakes
Bettye M. Wallace

Clay County

Mary A. Crowson
John D. Richardson

Cleburne County

Lois M. Griffin
Rosalee J. Turney
Rosemary C. Vance
Brenda J. Womack

Columbia County

Jimmy W. Allen
Louise D. Hooks

Conway County

Phyllis M. Blackshire
Sandra G. Church
Olen R. Fullerton
Juanita A. Nichols
Mary J. Paladino
Alma L. Stroud

Craighead County

Jane L. Bradbury
Bonnie C. Coleman
Mary F. Davis
Sharon K. Deloach
Ruby A. Hinson
Sara L. Hutchison
Dennis L. Kellett
Karen M. Rogers

Crawford County

Donnie W. Hallford
Sandra K. McClure
Ronald G. Murphy
Audrey J. Rose

Crittenden County

Fannye C. Campbell
Dani L. Franklin
Bertha L. Love

Cross County

Margaret K. Jones
Rickey L. Martin
Walter D. Mills

Dallas County

Don E. Hardman

Faulkner County

Vicki Bull
John L. Goswick
Velma L. Hoggard
Richard L. Isaacs
Emma J. Loetscher
Brenda B. McNabb
Erma D. Miller
Hazel K. Payton
Ella M. Reese
Jennifer C. Rogers
Billy C. White, Jr.
Nina N. Williams
Joy L. Wilson

Fulton County

Eddie L. Moss

Garland County

Joyce E. Boyd
Jimmy D. Carelock
Loretta F. Graves
Ernestine N. Miles
Jackie R. Moore
Jerry W. Roberts
Shirley F. Sanders

Grant County

Leona E. Buck
Joseph H. Judith

Greene County

Carolyn S. Pugh

Hempstead County

Susan C. Bailey
Willie Buck, Jr.

Hot Spring County

Marcille I. Coston
Paula Y. Morrison

Howard County

Martha R. Hendrix

Independence County

Patricia A. Bates
Carolyn J. Brooks
Carolyn F. Lynch
Alla J. Martin
Larry J. Robertson
J.W. Runyan

Izard County

Barry W. Bowman
Kathryn J. Haney
Treva J. Miller
Juanona C. Wiseman

Jefferson County

Carolyn D. Berry
Judith L. Holcomb
Rosie D. Jones
Parnetha Langel
Judy A. Lunsford
Billie Sanders-Lankford
Vicki L. Starlard-White
Fulton Walker
Danny F. Young
Patricia A. Young

Jackson County

Wanda Merriweather

Johnson County

Floyd R. Hern
Teri S. Pratt
Dixie A. White
Lafayette County
Linda S. Cole
Bobby J. Middlebrooks

Lawrence County

Peggy L. Cordell
Linda P. Gipson
Sherry L. Glenn

Lincoln County

Jeanne L. Breshears
Linda Ellis
Betty R. Phillips

Little River County

Evelyn L. Dowling

Lonoke County

Linda T. Acrey
Barbara J. Boyd
James A. Dalton
Ophal L. Jackson
Carroll D. King
Dewey L. Landers, Jr.
Wanda S. Stowers
Julius N. Woolfolk

Marion County

Jesse G. Bergeron
Everett G. Middleton
Curtis E. Olson
Reva M. Stevenson

Miller County

Callie F. Bledsoe
Cynthia L. Rains
Susan A. Woolley

Mississippi County

Beverly R. Gonzales
Kara L. Rayder
Thomas R. Tucker, Jr.
Rebecca L. Wise
Vera H. Work

Nevada County

James D. Cross

Ouachita County

Alta F. Brown
Vicky L. Daniel
Charles W. Garner
Mary L. Gibbs

Phillips County

Della Morrow
Ann S. Porter

Pike County

Patti J. Parker
Eugene J. Putz

Poinsett County

Mary R. Adams
William L. Stanley

Polk County

Carmen D. Long
Erma L. Lynn

Pope County

Catherine R. Ard
Billy G. Davis
Sherrye N. Shipp

Pulaski County

Felecia A. Anderson
Marie Applewhite
Gloria J. Blakney
Bob C. Burns
Robert L. Cline
Alice E. Cook
Mattie J. Davis
Vella D. Davis
Glenn E. Denton
Cynthia C. Fisher
Joseph R. Foster, Jr.
Marjorie M. Hendrix
Richard D. Johns
Cal Johnson, Jr.
Ophelia T. King
Forrest L. Kyle
Marianne W. Ligon
George E. Loss
Michael W. Mason
Ewilda M. Matchett
Jeannine O. Phelps
Auburn Ponder
Mary Roberson
Chester G. Russell
Lawrence E. Sandress
Brenda J. Scalici

Thanks to the thoughtfulness and generosity of individuals and local units, \$2,981 in memorials, honorariums and donations were contributed to ARTA in the last three month period. An additional \$824 contributed by Life Continuing members brings the total to \$3,805.

Your gifts to ARTA, for whatever reason, are greatly appreciated and are a meaningful and substantive part of funding the Parsons—Burnett Scholarship Grants. These scholarships are awarded to educators currently practicing in Arkansas to further their graduate studies.

Boone & Newton Co. RT & SS

In Memory of:

Geneva Bailey
Ramona Beavers

Conway County

In Memory of:

Olen Fullerton
Sherrye Shipp

Drew County

Parsons-Burnett Fund

Faulkner County RTA

In Memory of:

Ella Reese

Greene County RTA

In Memory of:

Carolyn Pugh

Johnson County RTA

In Memory of:

Carol Yates

Little Rock Retired Teachers

In Memory of:

Beth Shanks
Darrell Way

Little Rock Retired Teachers

Parsons-Burnett Fund

Phillips County RTA

Parsons-Burnett Fund

S. Pulaski County RTA

In Memory of:

Doris Robey

S. Pulaski County RTA

In Honor of:

Donna Morey

S. Sebastian County RTA

In Memory of:

Rhonda Brusso
Derin Caplena
Donna Crelia
Aaron Gamble
High Lowrimore
Ron Peerson
Kathryn Schlinker
Barbara Taylor
Donnie Whitson
Megan Whitson

Van Buren Co. RT & SEA

In Memory of:

Opal Aday

Donna Morey

In Memory of:

Ewilda Matchett

Etoyle Mouser

In Memory of:

Bea Robey
Kathryn Talley
Fulton Walker
Marie Fair

Elizabeth Pace

In Memory of:

Carolyn Pugh

Linda Powell

In Memory of:

Ewilda Matchett

In Memoriam, continued

Pulaski County, cont.

Beth Shanks
Judy Stell
Lorine Tramble
Jerry L. Trew
Sam C. Vandiver
Dianne D. Wood
Robert Yelder

Randolph County

Phillip D. Bass
Connie D. Cline
Ila E. Guntharp

Saline County

Herman Brewer
Karen L. Carter
Earlene C. Hunnicutt
Charles E. Jackson
Lillian F. Morris
Roger O. Reaves
Pamela S. Richmond
Joan B. Simms
Alice J. Spickes
Jane M. Stacy
Thomas C. Webb

Searcy County

Opal A. Aday

Sebastian County

Don R. Baker
Linda S. Dysart
Sydney L. Harper
Larry D. Loux
Franklin G. Taylor

Sevier County

Betty L. Walker

Sharp County

Billy G. Pierce

St. Francis County

Nancy Y. Lindsey
Elizabeth A. McClendon

Stone County

Jerri M. Landrum
Evelyn Morton

Union County

Ernestine M. Boone
Patsy R. Chandler
James T. Pettitt
Billy R. Webb

Washington County

Jeannean A. Arquette
Beverly Charleton
Esther H. Cook
Ruby G. Cook
Ivan J. Daubenberger
Burton L. Elliott
Jannie I. Gerety
Marilyn M. Hollis
Flora J. Lyon
Barbara McKee
Robert M. Parker
Bobby W. Robinson
Dorothy D. Seaton
Cornell L. Travis

White County

Peggy J. Best
Joann Caldwell
Betty L. Kelley
Gladys S. McGraw
Jerry D. Mote
Rachel J. Petty
Linda F. Pruitt
Twyla L. Turner
Harold A. Valentine

Woodruff County

Joe D. Hart

Yell County

Paulette Ridings

Out of State

Melba J. Bailey
Annie M. Bissic
Nan L. Brooks
Bernadene Bryant
Odessa J. Calhoun
Philip L. Cohen
Marvelee R. Converse
Marian W. Cooper
Mary P. Crisp
Charles E. Cunningham
Kathryn S. Davis
Wanda F. Eyre
Bruce E. Grindstaff
Shirley A. Grizzle
Jimmie R. Hall
Ed W. Harris
Vicki B. Hendrix
Steven G. Johnson
Dian C. Kisner
Glen A. Likins

Out of State, cont.

Hope D. Mayfield
Barbara J. McKinney
Zola G. Murray
Marcia W. Neal
Archie Ober
Juanita B. Osborne
Doris C. Robey
Luther L. Robinson III
Bonnie R. Rowland
Jean F. Roy
Billy L. Rutherford
Marvin H. Sams
Ladelle R. Smith
John B. Souza
Ralph A. Staggs
Alice R. Stevenson
Frances E. Stewart
Theresa W. Walker
Jeri L. Winfrey



Arkansas Retired Teachers Association
1200 Commerce St Ste 103 · Little Rock, AR 72202

PRSRT STD
U.S. POSTAGE
PAID
Permit No. 225
Little Rock, AR

Membership Key

Your membership type follows your name on the address portion at right:

Annual Member—number shows the expiration date of membership

Continuing Member—CM

Life Member—LM

Life Continuing—LC



Find us on
Facebook

Arkansas Retired Teachers Association Membership

Join, renew or change your membership

1. ☐ I elect to have \$2 per month deducted from my benefit check for ARTA dues (CONTINUING MEMBER, CM) *
2. ☐ I elect to have \$20 deducted from my benefit check for 12 months for a total of \$240 (LIFE MEMBER, LM) *
3. ☐ One-time payment of \$240 enclosed (LIFE MEMBER, LM)
4. ☐ I am already a Life Member AND elect to have \$_____ per month deducted from my benefit check for the ARTA Scholarship Grant Fund (LIFE CONTINUING MEMBER, LC) *
5. ☐ Payment of \$36 enclosed (ANNUAL MEMBER, July 1—June 30)
6. ☐ Contact information change **ONLY**

* Act 105 of 1985 authorizes the Arkansas Teacher Retirement System to deduct your ARTA dues from your monthly benefit check with your written permission. Such authorization may be canceled only by a written notice from you to the retirement system.

Name _____ Signature * _____

Address _____ Telephone _____

City/State/Zip _____

County _____ Social Security Number (last four digits only) _____

Email _____ Date _____

Send completed form and applicable payment to: **ARTA Membership, 1200 Commerce Street Ste. 103, Little Rock, AR 72202**