



# INTERLINK

CONNECTING ARKANSAS'S PUBLIC EDUCATION RETIREES

Volume 64, Number 2 | Parkview Towers • 1200 Commerce Street Ste 103 • Little Rock, AR 72202 • 501-375-2958 | Winter 2021

Submit your photos, news and content ideas by January 30 for inclusion in the next issue of this newsletter.

Address changes and corrections:  
office\_arta@att.net  
888-929-0955

## REMINDER

1099 statements are sent by the Arkansas Teacher Retirement System, not by ARTA.

To ensure that you receive your statements in a timely manner, make sure that ATRS has your correct contact information.

1-800-666-2877  
www.artrs.gov



Find and like us on Facebook to see travel photos, member news and upcoming event announcements.

## Stress & Fraud Susceptibility

Stressed out? It turns out that when life is stressful—because of financial worries, health issues or emotional events—we are more susceptible to frauds and scams.

A recent study on consumer fraud explored whether certain risk factors increase a person's vulnerability to frauds and scams. The findings showed specific environmental and emotional factors common to fraud victims.

The study was based on an AARP-sponsored survey of more than 9,000 American adults. Survey respondents who had a brush with 26 of the most common scams were divided into two groups: those who reported losing money and those who did not lose any money. The study found that compared to non-victims, victims had experienced more than twice as many stressful events, such as death in the family, job loss or loneliness/isolation.

The theory underlying this correlation is that coping with a stressful life event consumes valuable cognitive capacity that might otherwise be employed to spot and resist fraud.



Photo by Teona Swift from Pexels

Scammers intentionally probe victims about stressful life events, looking for a emotional vulnerability to be exploited. They may focus the victim's attention on an issue in order to keep them off balance and distracted.

The factors common to fraud victims, according to the report, were loss or loneliness, less social and family support, stronger emotions (respondents were more likely to be moved by what others consider simple things), and more overall exposure to scammers.

Frauds and scams are a global business, and are not going away. Prepare now by taking steps to deter scammers by installing protective software and signing up for the National Do Not Call Registry. Be an informed consumer and always safeguard your personal information.

It is especially important to be aware of your own vulnerabilities and scammers' tactics to exploit them. We can also assist our friends and neighbors who may be vulnerable by reaching out to those who are experiencing emotional events or distressing situations.

## ARTA-Endorsed Insurance Plans

The ARTA Board of Directors has voted to renew its sponsorship agreement with Hughes and Associates and Insurance Advantage. Insurance products covered by the agreement include dental and vision insurance, lump-sum cancer insurance, long-term care insurance, lump-sum heart and stroke insurance, and Medicare products.

The updated agreement includes a new Delta Dental plan for ARTA members. Affected members will receive more detailed information, and the option to change or keep their plan, prior to their anniversary date for renewal.

For questions about any of the endorsed products, or other products and services offered by the respective agents, please contact them directly or visit them online:

**Hughes & Associates Insurance Agency**  
2000 W Main  
Russellville, AR 72801  
479-967-1339  
www.matthughesinsurance.com

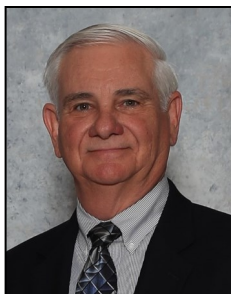
**Insurance Advantage**  
1200 W Main Street  
Jacksonville, AR 72076  
501-988-2726  
www.ia-office.com

# Message from the President

## What is ARTA?

What is ARTA?

We know ARTA (the Arkansas Retired Teachers Association) as a non-partisan, non-profit organization of Arkansas public school retirees, which advocates for and promotes the personal, professional, social, and economic interests of Arkansas's current and future public education retirees.



If you are receiving this INTERLINK newsletter through the mail you are a member of ARTA and have some knowledge of the organization.

There are nearly 40,000 retired Arkansas public school employees who are *not* members of ARTA and about 70,000 current Arkansas public school employees who will be eligible for ARTA membership when they retire. This is over 110,000 retired and current Arkansas educators who are not aware of ARTA and our advocacy for them. Many believe ARTA is the same organization as the Arkansas Teacher Retirement System (ATRS), which has the fiduciary responsibility for the retirement fund's investments and distribution to retirees.

One of my goals as ARTA president is to create more awareness of ARTA among 1) current public school retirees, to increase present membership from an existing group of eligible individuals; 2) active public school employees, to create a sustainable, healthy future membership; 3) the public in general, for good community relations.

In order to accomplish this goal of increased ARTA awareness, I am asking all local units to set aside five minutes at your meetings to brainstorm and discuss various ways that your local unit can help create more awareness of ARTA in your communities. Local units and individual members are also encouraged to send suggestions to our ARTA state office on how the ARTA organization can assist the local units in accomplishing this goal.

As a member, you know that ARTA is an active organization that supports Arkansas's public school retirees. Please help us share that message with others who share our interest in a vibrant retirement supported by a secure retirement system.

**David Cauldwell**

ARTA President



From the ARTA Staff & Board of Directors

## Important Contact Information

### Arkansas Retired Teachers Association

Inside Pulaski County: 501-375-2958  
Toll Free (Nationwide): 1-888-929-0955  
E-mail: [office\\_arta@att.net](mailto:office_arta@att.net)  
[www.artanow.com](http://www.artanow.com)

### Arkansas Teacher Retirement System Retirement Benefits and Checks

Inside Pulaski County: 501-682-1517  
Toll Free (Nationwide): 1-800-666-2877  
E-mail: [info@artsr.gov](mailto:info@artsr.gov)  
[www.artsr.gov](http://www.artsr.gov)

### Arkansas Employee Benefits Division (Health and Life Insurance)

Inside Pulaski County: 501-682-9656  
Toll Free (Nationwide): 1-877-815-1017  
E-mail: [AskEBD@dfa.state.ar.us](mailto:AskEBD@dfa.state.ar.us)  
[www.arbenefits.org](http://www.arbenefits.org)

### Long Term Care Insurance Cancer/Heart/Stroke Dental & Vision Insurance Medicare Products

Mary Alice Hughes  
Lisa Bamburg  
501-988-2726  
Email: [info@ia-office.com](mailto:info@ia-office.com)  
[www.ia-office.com](http://www.ia-office.com)

Matt Hughes  
479-967-1339  
Email: [info@matthughesinsurance.com](mailto:info@matthughesinsurance.com)  
[www.matthughesinsurance.com](http://www.matthughesinsurance.com)

### Delta Dental Insurance

501-988-2726  
[www.deltadentalar.com](http://www.deltadentalar.com)



The INTERLINK is published by  
Arkansas Retired Teachers Association  
1200 Commerce St Ste 103  
Little Rock, AR 72202

David Cauldwell ..... President  
Diana Glaze ..... President-elect  
Jeff Stubblefield ..... Vice President  
Cindy Cole ..... Secretary  
Donna Morey ..... Executive Director  
Tammy Gray ..... Communications  
Linda Powell ..... Office Manager

# Message from the Executive Director

## 2022 is a “Go”

The fall of 2021 brought still more changes to our “new normal COVID19 world”. Hopefully those who wanted booster shots have gotten them. Now that the FDA has approved and the CDC recommends vaccines for children ages 5-11, we can continue to get back to more normal gatherings. As a global society, we have suffered the mental, physical and emotional effects of this period of time. Everyone has shown different symptoms in coping through this time. Hopefully we will never have to live through another global pandemic of this scope and magnitude again.

Our methods for business meetings and medical appointments have changed to hybrid, with some gathering in person while others choose to meet using technology. Having different ways to access meetings should add to the number of individuals participating in groups.

Personally, the week of October 18-22, 2021 I was connected with others virtually at the NRTA virtual advocacy conference. Many informative speakers shared with retired teacher leaders from around the country. We were asked to use technology to reach out to our elected federal legislators and their staff members. Some of the ARTA leaders joined me on those zooms. The issues that we shared with them included addressing the high cost of prescription drugs and support for the Credit for Caring bills.

Each fall AARP and NRTA honor their founder, Dr. Ethel Percy Andrus with the Andrus Awards. Millions of older Americans have benefited from the work of Dr. Andrus and those organizations. ARTA also benefits from close relationships with the leadership of NRTA and AARP. I take both comfort and pride in that each group is non-partisan in our efforts to support, maintain and increase the benefits for all Americans.

Dr. Andrus was the first female high school principal in California. As many of you know, she found one of her former teachers having to live in a chicken coop because she had no retirement benefits. That led to her developing apartments in Ojai, CA for retired public-school employees. Her influence also led ARTA to being instrumental in building the Parkview Towers apartment building for retired educators in Little Rock under the direction of Miss Willie Mae Lawson. Working for the common good is what life should be about, and what the Andrus Awards celebrate.

ARTA is returning to more normal activities. Please contact the office if you would like us to come share at your local meetings.



**“That is the challenge: to live up to our better selves, to believe well of our fellow men and perhaps by doing so, to help create the good we believe in.”**

**Dr. Ethel Percy Andrus  
NRTA & AARP Founder**

ARTA travel has resumed, with a successful fall foliage trip to Vermont and another to historical sites on the Heritage of America tour. Collette Travel, our travel partner, assures us that all of our trips will go regardless of the number of travelers who book the trip. Tours will have between 38-44 travelers. We can send an escort if at least 12 of those booked are ARTA travelers. No trip closes until it is full. So, if the trip is still up on our website, there is space. Check out our currently scheduled trips at

[www.artanow.com/travel](http://www.artanow.com/travel).

As we enter the holiday season, please count your many blessings and be thankful. We are so fortunate to have great benefits as Arkansas public education retirees.

*Best Wishes for a Happy New Year,*

***Donna***

### REMINDER: AR Benefits Retiree Coverage

You must be on the Public School Employees Plan on your last day of employment AND you must be eligible to begin drawing your retirement from ATRS to enroll in the AR Benefits PSE retiree plan.

Eligible retirees can enroll in retiree coverage **one** time. If you decline coverage, you will have to take multiple steps to apply later. If you drop coverage, you will **not** be able to rejoin later.



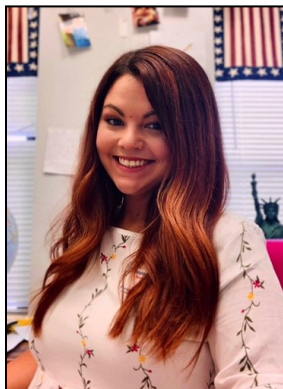
## Parsons-Burnett Scholarship Recipients

ARTA awarded 12 Parsons-Burnett scholarship grants in 2021. Checks in the amount of \$2,000 were presented to the recipients at fall school board or other local meetings by ARTA representatives.

These competitive awards are given to practicing educators in Arkansas's public schools for the purpose of furthering their own education. The grants are funded by memorials and donations from ARTA members and their families.



Brittany Bailey  
Lake Hamilton School District  
Also pictured: Golden Lloyd  
and Caroline Miller



Stephanie Cooper  
Paragould School District



Stephanie Barr  
Harrison School District  
Also pictured: Charles Adair  
and James Morris



Sarah Henry  
Rogers School District  
Also pictured: David Cauldwell



Julie Beary  
Batesville School District  
Also pictured: Alice Simmons



Lonnie Hester  
Hackett School District  
Also pictured: David Cauldwell and Jim Reynolds

# Parsons-Burnett Scholarship Recipients



Adrienne McElyea  
Greene County Tech  
School District



Mollie Sanford  
White Hall School District  
Also pictured: Doug Dorris  
and Betty Cook



Marti Salisbury  
Alma School District  
Also pictured: Andrea Romo and David Cauldwell



Kristen Scarlett  
Brookland School District  
Also pictured:  
Mary Ann Hodges



Stephanie Sampley  
Ozark School District  
Also pictured: Jim Ford, Andrea Romo and  
David Cauldwell



Delaney Wells  
Dollarway School District  
Also pictured:  
Evelyn Cash



# Member News

## Area I

The **Franklin County RTA** regularly reports on their monthly meetings, which include speakers and programs of local interest. Recent presenters have included Master Forager Charlie Griffith, who spoke about finding and preparing edible plants, and Jim Yeager, Ozark native and author of **Backroads and Ballplayers**.

The **Logan County RTA** recognized member VJ Cunningham as the LCRTA Community Service Volunteer of the Year. VJ completed 902 hours of volunteer service in 2020-2021.



VJ Cunningham (L) and Glenda Ezell,  
LCRTA President (R).

## Area II

The **Independence County RTA** treated teachers and staff at Eagle Mountain Elementary to baked goods before Halloween. Other local schools will be the recipients of goodies throughout the year.



## Area III

The November meeting of the **Craighead County RTA** focused on veterans. Members heard from Linda Nash of the ASU Beck Center for Veterans, who spoke about their work with local vets. CCRTA members donated \$800 in gift cards to be shared with veterans in need.



Dorothy Davidson, Glenda Cowan,  
Linda Nash & Stephanie Neely

The **Phillips County RTA** named four recipients for their 2021 academic scholarships.

Leah Carey, Barton High School, KenTanya Cox, KIPP Collegiate High School, JaKaria McDaniels, Central High School, and Brianna Taylor, Central High School received \$1,000 each from the PCRTA to be used at the university of their choice.

## Area IV

The **Clark County RTA** kicked off their year with a potluck before resuming regularly monthly meetings. Each month, members are encouraged to bring items to address a community need. October's donation of \$50 and food items went to support the Ecumenical Food Pantry's Thanksgiving boxes.



Veda Goodyear, Judy Honey, Ida Tramble,  
Nellene Roberts, & Wanda O'Quinn

## Area IV

The **Nevada County Retired School Employee Association** reports that they are glad to be meeting in person again! In September, they enjoyed a presentation on estate planning. In October, ATRS director Clint Rhoden updated the group about their monthly benefits and how ATRS is working to protect them. In November, Angelyn McMurry presented information about We Are Free, a shelter designed to help women who have come out of human trafficking. Members are looking forward to more interesting and informative monthly programs in the new year.



Find and like us on Facebook to see more member photos and local news.

## Welcome New Life Continuing Members

ARTA welcomes the following new Life Continuing members:

**Bronnie M. Rose**, Faulkner County; **Virginia Booth**, Newton County; and **Patricia L. Bell**, Washington County.

Life Continuing members are Life members who have elected to have additional dues deducted from their monthly benefit checks. These additional dues are used to support the Parsons-Burnett Scholarship Fund.

## Area VI

The **Garland County RTA** held its second meeting of the year in October. The meeting included a white elephant sale of members' donated items, pictured below, which garnered \$186. This was combined with the funds in their Dollars for Scholars jar, for a total of \$200 raised for their scholarship fund.

Members also welcomed the return of the refreshment table, and one lucky winner received a \$25 gift certificate donated by a local restaurant.



## Welcome New Life Members

**Benton County**  
Cecil H. Nichols

**Boone County**  
Brenda S. Lenderman

**Carroll County**  
Vana K. Smith

**Clark County**  
Donna Adkins

**Columbia County**  
Teri Burge

**Conway County**  
Bethali Sommers

**Crittenden County**  
Hoover C. Williams, Jr.

**Faulkner County**  
Lisa Nash

**Garland County**  
Shirley June Barron

**Hempstead County**  
Michael R. Henagan

**Independence County**  
Stephanie Miller

**Jefferson County**  
Peggy Matlock

**Johnson County**  
Debra C. Overbey  
William H. Overbey

**Logan County**  
Bess Ann Cauthon

**Lonokey County**  
Debrah Shelton

**Marion County**  
Janet Wood

**Newton County**  
Jon Randall Laverty

**Pulaski County**  
Edith Pamela Ellis  
Janice Kucala

**Saline County**  
Paul K. Calley

**Sebastian County**  
Mary Ann Johns

Jolene Leding  
Kathy Price

**Sevier County**  
Sherry M. Surber

**Washington County**  
Gwen Shankle

**White County**  
Judy Annette Ballard

**Out-of-State**  
Susan McDonald  
Debra S. Mertz

## ARTA Travel Policy

ARTA members are invited to participate in safe, affordable group travel. Guests are welcome but must travel with an ARTA member. Whenever possible, ARTA trips are escorted by a member of the ARTA staff.

**BOOK EARLY**—ARTA partners with Collette Travel to offer these customized travel opportunities. Plans include a reserved block of airline seats for each trip. A deposit is required to reserve your seat and to ensure you receive any advertised price reduction. Reservations made after the seating block is filled, or after the booking date has passed, are based on availability and are subject to a price increase. Prices include round trip airfare from Little Rock National Airport. For information about departures from alternate gateways please contact ARTA..

**BOOK ONLINE**—Collette Travel utilizes an online reservation booking system. Go to [www.artanow.com/travel](http://www.artanow.com/travel) and click on each trip for the customized web page with itinerary, pricing and online reservation form.

**MOTORCOACH TRIPS**—ARTA contracts with Little Rock Tours for motor coach trips to U.S. destinations. These trips require a minimum number of travelers booked **with deposit**. Reservations are accepted on a first come-first serve basis.

**COVID 19**—All scheduled trips are subject to change prior to the departure date. Travelers with confirmed reservations will be notified if the status of a trip changes in any way.

To suggest a future trip or for general questions about traveling with ARTA, please contact Donna Morey by email at [donna\\_arta@att.net](mailto:donna_arta@att.net) or 501-375-2958.

## Book Now for 2022

### Spotlight on Tuscany

**March 22—30, 2022**

**Extend your vacation with an optional 5-day, 3-night pre tour to Rome**

Rolling landscapes, savory wines, delicious food and stunning architecture—find all of this and more in Tuscany. Highlights on this journey among Italy's most charming towns include Montecatini Terme, Lucca, Gothic Line, Winery Tour, Florence, Choice on Tour, Pisa, Cooking Class, Cheese Farm, and San Gimignano.

**Early booking date has passed—Call for more information**

- ◆ For a detailed itinerary, pricing, and online reservation form, visit [www.artanow.com/travel](http://www.artanow.com/travel). For other questions contact Donna Morey at 501-375-2958 or [donna\\_arta@att.net](mailto:donna_arta@att.net).

### California Dreamin': Monterey, Yosemite and Napa

**May 9—16, 2022**

From the rugged coastline of the Pacific Ocean to Yosemite National Park, Lake Tahoe to Napa Valley, the scenery, history, and culture of northern California is unparalleled. Highlights include: Monterey, Scenic 17-Mile Drive, Yosemite National Park, Sacramento, Choice on Tour, Lake Tahoe Scenic Cruise, Napa Valley Vineyard Tour and Wine Tasting, San Francisco. **Early booking date has passed.**

**Call for more information.**

- ◆ For a detailed itinerary, pricing, and online reservation form, visit [www.artanow.com/travel](http://www.artanow.com/travel). For other questions contact Donna Morey at 501-375-2958 or [donna\\_arta@att.net](mailto:donna_arta@att.net).

### Discover the Highlights of Norway

**July 15—23, 2022**

**Extend your vacation with an optional 5-day, 3-night pre tour to Stockholm or 4-day, 3-night post tour to Iceland**

Journey to a land of mountains, glacial fjords, legends, and charming people. Dive into the culture of the region, connecting with layers of Viking history, attention-grabbing nature, and a sense of refined traditions. Highlights include Oslo, Fram Museum, Stave Church, Flåm Railway, Sognefjord, Briksdal Glacier, Geirangerfjord Cruise, and Bergen **Save \$200 pp—Book by January 9, 2022**

- ◆ For a detailed itinerary, pricing, and online reservation form, visit [www.artanow.com/travel](http://www.artanow.com/travel). For other questions contact Donna Morey at 501-375-2958 or [donna\\_arta@att.net](mailto:donna_arta@att.net).



## IMPORTANT NOTICE:

Collette Travel currently requires full vaccination for domestic travel.

### America's Cowboy Country

**September 3—11, 2022**

This tour of the American west features Salt Lake City, Grand Teton National Park, Yellowstone National Park, Buffalo Bill Center of the West, Deadwood, Custer State Park, Crazy Horse Memorial, and Mt. Rushmore. **Save \$100 pp—Book by February 24, 2022**

- ♦ For a detailed itinerary, pricing, and online reservation form, visit [www.artanow.com/travel](http://www.artanow.com/travel). For other questions contact Donna Morey at 501-375-2958 or [donna\\_arta@att.net](mailto:donna_arta@att.net).



### Croatia & Its Islands: Small Ship Cruising on the Adriatic Coast

**October 4—15, 2022**

Wander along medieval walls, marvel at enchanting waterfalls, and relax on sunny islands. From Zagreb to Dubrovnik, set out to experience the best of Croatia and the Adriatic Coast. Other highlights include Stone Gate, Šibenik, Cathedral of St. James, Krka National Park, Split, Diocletian's Palace, Choice on Tour, 7-Night Adriatic Cruise, Trogir, Bol, Hvar, Biševo Blue Cave, Vis, Korcula, Mljet National Park, and Slano. **Early booking date has passed—Call for more information**

- ♦ For a detailed itinerary, pricing, and online reservation form, visit [www.artanow.com/travel](http://www.artanow.com/travel). For other questions contact Donna Morey at 501-375-2958 or [donna\\_arta@att.net](mailto:donna_arta@att.net).



### Spotlight on New York City Holiday

**December 5—9, 2022**

"Start spreading the news," you'll be visiting America's most exciting metropolis as it shines during the holiday season. Your New York City getaway is filled with shopping, sightseeing, endless entertainment and holiday cheer. Highlights include Greenwich Village, Wall Street, Christmas Spectacular at Radio City Music Hall, Statue of Liberty, Ellis Island, 9/11 Memorial, 9/11 Museum, and a Broadway Show. **Save \$50 pp—Book by June 28, 2022**

- ♦ For a detailed itinerary, pricing, and online reservation form, visit [www.artanow.com/travel](http://www.artanow.com/travel). For other questions contact Donna Morey at 501-375-2958 or [donna\\_arta@att.net](mailto:donna_arta@att.net).



# In Memoriam

*"These immortal dead who live again in minds made better by their presence"*

## Arkansas County

Reba L. Currie  
Janice M. Smith

## Ashley County

Kenneth M. Allbritton  
Lloyd H. Collins  
Helen H. Foote  
Anita P. Foster  
Mary F. Lineberger

## Baxter County

Jean Cook  
Louise S. Ferguson  
Patricia A. Rowe  
Kay R. Sims

## Benton County

Douglas A. Albertson  
Violet L. Allmon  
Lionel S. Burkes  
Clyse D. Craig  
Charles E. Ellis  
Lynn F. Garst  
Keith B. Garton  
William M. Kaufman III  
Myron O. Miller  
George G. Porter  
Larry G. Powell  
Linda J. Stratton  
Stevie D. Tosh

## Boone County

James R. Bryant  
James H. Carter  
Martha J. Gimenez  
Mary F. Mallett  
James R. Rogers  
Anna M. Saylors

## Bradley County

Linda A. Barrett  
Macy L. McElroy

## Chicot County

Gwendolyn M. Anderson  
Kathryn I. Sabbatini  
Bernard K. Youngblood

## Clark County

Gary L. Lewis

## Clay County

Doris E. Day

## Cleburne County

Nancy W. Hall  
Charlotte L. Lacy

## Columbia County

Shirley A. Grigsby  
Irene R. Harris  
Murrah G. Pickler

## Conway County

Deborah S. Driggers  
Anita G. Snyder  
Betty F. Swope

## Craighead County

Irma C. Calvert  
Bonnie L. Cheshier  
Eleanor D. Farmer  
Margaret A. Gunter  
Edward E. Hollis  
Donna G. James  
Edna R. Larue-Hurst  
Agnes F. Mayberry  
Marie E. McCullough  
Teresa Morgan  
Ladonna S. Nance  
Jeanie S. Taylor  
Brenda D. Waddell  
Charlotte B. Wilcoxson

## Crawford County

Donna D. Beneux  
John W. Bivens  
Don G. Mendenhall  
Evelyn M. Parmenter  
Jim J. Simmons

## Crittenden County

Virginia N. Andrews

## Cross County

Portia M. Eskridge  
Melissa A. Moore

## Dallas County

Rita S. Launius  
Margie Nance  
Charles Shaver  
Royce J. Sorrells

## Desha County

Velma Leonard

## Drew County

Bobby L. Ferrell  
James H. McKeown, Sr.

## Faulkner County

Llewellyn A. Delaney  
William A. Ellzey  
Helen S. Porter  
Denver L. Prince  
Faye H. Sanson

## Faulkner County

James E. Smith  
Danny E. Stell  
Laraine E. Stevenson  
Joyce G. Sullivan  
Barbara Throneberry

## Franklin County

Shirley J. Burnett  
Latane A. Powell

## Fulton County

Shana L. Cochran  
Lula B. Waits

## Garland County

Michael Ashley  
William K. Beard  
Billie A. Dishongh  
Steve F. Hanzlik  
James W. Nelson  
Gerald A. Plank  
June Rhodes  
Mona L. Rothwell  
O. J. Sharp  
Larry R. Stanley

## Grant County

Penn A. Breazeal  
Nila J. Clinton  
Glenda D. Daugherty  
Tim F. Lankford

## Greene County

Edna F. Crider  
Jo Ann McDonald

## Hot Spring County

Richard A. Brooks  
Stephen N. Delaney  
Pat A. Knight  
Betty J. McGuire  
Elsie M. Tillery  
Bobby D. Watson  
Sherrion A. Wiley

## Howard County

Vickie L. McClane

## Independence County

Charlotte J. Finney  
Auda F. Hogan  
Roberta L. Kinion  
Russell A. Ohnstad  
Melba J. Ward

## Jackson County

Sandra L. Gaskin  
Leslie S. Mays  
Viola P. Rash

## Jefferson County

Arthur L. Arnold  
Harold Branson  
Mary B. Doggett  
Samuel P. Hill  
Morgan W. James  
Virginia Littlejohn  
Charles W. Norton  
Herbert E. Owen  
Lyna C. Sanders Johnson  
Earnestine Shaw  
Jimmy L. Smith  
Mary M. Sykes  
Joe Thornton  
Audrey L. Trotter  
Brenda M. Wall

## Johnson County

Jorge Corral

## Lawrence County

Lula B. Jones  
Elaine G. Lynch  
Vernon R. Scott  
John B. Smith

## Lee County

Sheila F. Reeder

## Lincoln County

Katie J. Blake  
Gene C. Finley

## Little River County

Farrel D. Lisenby

## Logan County

John Deichmann  
Wanda L. Keener

## Lonoke County

Charles G. Cook  
Linda M. Erwin  
Patricia J. Goode  
Donna K. Hill  
Helen M. Holladay  
Jo A. Martin  
Tony R. McCrystal  
Larry C. Scaife  
Anthony R. Scalf  
Lynn M. Whited  
Donald G. Wilson

## Madison County

Suzanne M. Graham  
Clara J. Pemberton

## Miller County

Brenda L. Douglass  
Richard G. Edwards  
Carolyn F. Hinton

## Mississippi County

Jerry L. Bell  
Patsy L. Dunlap  
Margaret A. Kisman  
Lola L. Womble

## Monroe County

Annette Sparkman

## Montgomery County

Betty J. Weston

## Ouachita County

Mary E. Lowe

## Pike County

Randy M. Sorrells

## Poinsett County

Dorothy J. Martin

## Polk County

Sharon G. Fairless  
Joyce E. White

## Pope County

Billy W. Blalack  
Alma J. Crow  
Sandra S. Daniel  
Sarah N. Graves  
Betty L. Pugh  
Harvey F. Rose  
David L. Staggs

## Pulaski County

Karen Y. Amick  
Carroll G. Anderson  
Ted Beall  
Paula H. Bilal-Rafter  
Ammon A. Billings  
Sharon C. Bokamper  
Carolyn S. Bracy  
Frances D. Bridges  
Harry J. Brummett  
Ardeen H. Bryant  
Barbara A. Chapman  
Betty J. Chapman  
Doris J. Collier  
Teresa J. Cook  
Edwina G. Cox  
Sharon D. Culpepper  
Sandra J. Diedrich

*Continued next page*

Thanks to the thoughtfulness and generosity of individuals and local units, \$1,503 in memorials, honorariums and donations were contributed to ARTA in the last three month period. An additional \$543 contributed by Life Continuing members brings the total to \$2,046.

Your gifts to ARTA, for whatever reason, are greatly appreciated and are a meaningful and substantive part of funding the Parsons—Burnett Scholarship Grants. These scholarships are awarded to educators currently practicing in Arkansas to further their graduate studies.

## Ashley County RTA

### In Memory of:

Rose Duckworth

## Desha County RTA

Parsons-Burnett Fund

## Faulkner County RTA

### In Memory of:

Mary Pat Cullum

Dr. Denver Prince

## Franklin County RSEA

### In Memory of:

Latane Powell

### In Honor Of:

Dr. Charlie Griffith

## Independence Co. RTA

### In Memory of:

Sylvia Crosby

Phyllis Terhune

## Little Rock

### Retired Teachers

Parsons-Burnett Fund

### In Memory of:

Linda Kirby

## Miller County RTA

### In Memory of:

Reba Alderson

## Scott County RTA

### In Memory of:

Louise Newberry

## S. Pulaski County RTA

### In Memory of:

Kathleen “Kay”

Beckworth

Barbara Chapman

Paula Hunter

### In Honor of:

Donna Morey

## St. Francis Co. RTA

Parsons Burnett Fund

## Union County RTA

### In Memory of:

Judy Bailey

## Anna Floyd

### In Memory of:

Margie Eaton

Wayne Floyd

Erma Guiltner

## John Moore

Parsons-Burnett Fund

## Etoyle Mouser

### In Memory of:

Mona Rothwell

## Bronnie Rose

Parsons-Burnett Fund

## Jane Runyan

### In Memory of:

Barbara Chapman

## Bruce Vick

Parsons-Burnett Fund

## Dr. Ella Walker-Rolfe

### In Memory of:

Melton Black Morgan

Michelle Mitchell

Lionel Ward

## Former Watson

### Teachers

### In Memory of:

Barbara Chapman

## In Memoriam, *continued*

### Pulaski County

Joyce A. Duhart

Marie G. Fair

Essie P. Furlow

Sally J. Garrison

Martha A. Harding

Vivian A. Harris

Russell Hawkins, Sr.

Clarence M. Haymes

Lyman C. Horton

Richard H. Horton

Vickey J. Houle

Patsy Y. Jones

Kathryne A. Jordan

Sheldon Joshua

John W. Kunkel

Barbara J. Lawson

Phillip E. Lewis

Catherine A. Martindale

Doris J. McGowan

Lillie B. McGuire

Johnny O. McIntire

Marcia A. Meador-Lebo

Johnnie L. Piggee

Billy W. Porter

Michael P. Price

Carla D. Riller

Cornelius C. Roberts

### Pulaski County

Odis Ross

Debora A. Rozzell

Sammie N. Tollette

Lionel Ward

Ann G. Warren

Charles W. Washington

Earline Way

Helen D. White-Lawson

Carolyn S. Williams

Barbara C. Woodyear

### Randolph County

Lonnie Butler

Ruth A. Sanders

### Saline County

Mary J. Abernathy

Naomi Baker

Thurman Ford, Jr.

Paula A. Hunter

Geraldine G. Jackson

Randy D. Kizer

Charlotte A. Morrison

Debra S. Speer

### Searcy County

Lucile Horton

### Sebastian County

Carol A. Bateman

Charles G. Granger

Grace L. Harvey

Lana C. Neumeier

Joy S. Ross

### Sharp County

Marla J. Thompson

### St. Francis County

Cleo Fuqua, Sr.

Wanita Rodgers

C L. Bridges

Jo A. Burghart

Pamela M. Smith

### Stone County

Madeline K. Strutton

### Union County

Perry J. Gathright

Norma J. Givens

Noweeta W. Joyner

Sally E. Ruff

### Washington County

Sherry D. Bell

Oma L. Blackwell

Margaret A. Elam

Lloyd A. Fink

### Washington County

Norman C. Koeller

Kimberly G. McFarland

Marilynn J. Merryman

John M. Mills

Norma F. Parham

Kenneth W. Spencer

David A. Whittenburg

Peggy Wynn-Burks

### White County

Ronald Britton

Dorothy A. Cook

Marion D. Craig

Velma D. Hoggard

Billie J. Lassiter

Naomi L. McCampbell

Willard Parker

Kenneth N. Strayhorn

Lenora G. Sutton

### Woodruff County

Raymond A. Bowen

### Yell County

Lynn D. Sigle

### Out of State

Reba L. Alderson

Kathleen B. Beckworth

Melinda K. Bell

### Out of State

Harry G. Brown

David H. Campbell

Caroline J. Channell

Joann Clark

Virginia L. Coggins

Buenah H. Combs

Carol Cowles

Shirley A. Dillinger

Rosie M. Duckworth

Jill P. Dufour

Charlene C. Gill

Constance E. Hager

James C. Langley

Aurita A. Long

Anamaria L. Malave

Barbara C. McConnell

Patricia J. McLaughlin

Melton C. Morgan

Ruby M. Nordgren

Virginia M. Reid

Linda F. Robinson

Lee Ross

Linda F. Shibley

Keiko G. Smith

Irma Welch

Willard W. Welch

Betty A. Williamson





PRSRT STD  
U.S. POSTAGE  
PAID  
Permit No. 225  
Little Rock, AR

Arkansas Retired Teachers Association  
1200 Commerce St Ste 103 · Little Rock, AR 72202

### Membership Key

Your membership type follows your name on the address portion at right:

Annual Member—number shows the expiration date of membership

Continuing Member—CM

Life Member—LM

Life Continuing—LC



Address changes and corrections: office\_arta@att.net or 501-375-2958

### Arkansas Retired Teachers Association Membership Form

Act 105 of 1985 authorizes the Arkansas Teacher Retirement System to deduct your ARTA dues from your monthly benefit check with your permission. Such authorization may be canceled only by a written notice from you to the retirement system. Please select one of the following options, sign and return this form to ARTA for processing.

**Return form ONLY if you are not currently an ARTA member OR if you wish to make a change.**

1. ☐ I elect to have \$2 per month deducted from my benefit check for ARTA dues (CONTINUING MEMBER, CM)
2. ☐ I elect to have \$20 deducted from my benefit check for 12 months (Total \$240—LIFE MEMBER, LM)
3. ☐ One-time payment enclosed (Check for \$240—LIFE MEMBER, LM)
4. ☐ I am a Life Member AND elect to have \$2 per month deducted from my benefit check for the Parsons-Burnett Grant.  
(LIFE CONTINUING MEMBER, LC)
5. ☐ Renewal payment of \$36 enclosed (ANNUAL MEMBER, July 1—June 30)

Name \_\_\_\_\_ Signature \_\_\_\_\_

Address \_\_\_\_\_ Telephone \_\_\_\_\_

City/State/Zip \_\_\_\_\_

County \_\_\_\_\_ Social Security Number (last four digits only) \_\_\_\_\_

Email \_\_\_\_\_ Date \_\_\_\_\_

Send completed form and applicable payment to: **ARTA Membership, 1200 Commerce Street Ste. 103, Little Rock, AR 72202**