



INTERLINK

CONNECTING ARKANSAS'S PUBLIC EDUCATION RETIREES

Volume 63, Number 3 | Parkview Towers • 1200 Commerce Street Ste 103 • Little Rock, AR 72202 • 501-375-2958 | Spring 2021

Submit your photos, news and content ideas by April 30 for inclusion in the next issue of this newsletter.

Address changes and corrections:
office_arta@att.net
888-929-0955

TAX STATEMENTS

Income statements for tax purposes (1099s) were provided by the Arkansas Teacher Retirement System. For questions or to update your mailing and account information, contact ATRS directly:

800-666-2877
www.artrs.gov



Find and like us on Facebook to see travel photos, member news and upcoming event announcements.

Area Conferences to be Held Virtually

In place of the area conferences held around the state each spring, each ARTA membership area will be holding a virtual meeting for their respective members.

Area I
April 27 10 AM
Meeting ID: 818 6501 7295
Passcode: 280564

Area II
April 27 2 PM
Meeting ID: 842 8699 8557
Passcode: 978639

Area III
April 29 2 PM
Meeting ID: 883 3826 6230
Passcode: 520797

Area IV
May 11 10 AM
Meeting ID: 891 1182 6927
Passcode: 936601

Area V
May 4 2 PM
Meeting ID: 834 1498 8856
Passcode: 183643

Area VI
May 4 10 AM
Meeting ID: 834 2309 9950
Passcode: 867559

Area VII
April 29 10 AM
Meeting ID: 811 4538 1489
Passcode: 204167

Area VIII
May 11 2 PM
Meeting ID: 853 5019 6580
Passcode: 278285

Area meetings are open to anyone with the meeting information. Participants can join their meeting from the web at www.artanow.com/meetings.

Those without internet or a web-enabled device can join the meeting by telephone. Call 312-626-6799 or 346-248-7799 and enter the meeting ID and passcode when prompted.

Annual ARTA Convention Goes Virtual

The Annual ARTA State Convention will be held virtually on May 25, 2021 at 10 AM.

Business items include the election of officers and the approval of changes to the constitution. Guests from ATRS and our insurance vendors will be invited to give reports.

All ARTA members are invited to participate.

Join the meeting from the web at www.artanow.com/convention or by phone at 312-626-6799 or 346-248-7799.

Meeting ID: 894 5353 3293
Passcode: 310909

Zoom 101 Training

April 8, 2 PM or April 15, 10 AM

Visit www.artanow.com/meetings for more information

Message from the President

A Sense of Optimism

Life as we knew it was forever changed last March when Governor Hutchinson announced the discovery of COVID 19 in Arkansas. After a full year now of navigating through “Pandemic Life” I am finally feeling a sense of optimism. Our infected numbers are decreasing, and our vaccinated numbers are increasing! After receiving my vaccine, I immediately began to feel a bit safer, as if it were a shield of protection allowing me to embark into this next phase of our “new norm.”



As restrictions are lifted throughout the country, and even here in Arkansas, I’m personally hesitant to remove my mask so quickly. Call it the teacher in me, but I still question all the unknowns and with the prevalence of new virus strands, I’m going to take my time in lifting my own safety requirements. I look forward to the day when I can tell my grandchildren how I survived the Pandemic of 2020.

Enough of that - let’s get on with our ARTA news!

I sincerely appreciate those of you that have joined me, through Zoom, for our regular ARTA meetings. I would also like to thank those that have participated in their respective local meetings. The Zoom program we purchased with a small grant from NRTA quickly became an asset to many of us through these trying times. This virtual technology allows us to stay engaged and involved with each other by allowing us to remain safe in our homes.

Please note that our area meetings this year, as well as our state convention, will also be held virtually through Zoom. I am optimistic of your attendance and participation at these meetings.

Tammy, our Communications Coordinator, will hold two more workshops to assist any members that are not quite comfortable navigating through Zoom. Please sign up for additional help if you feel you may need it. The Zoom trainings will be on April 8th and April 15th. Additionally, you may also call the office at 501-375-2958 if you need personal assistance. New technology can always be a bit terrifying but there is no need to fear, the ARTA staff is wonderful.

I hope you have enjoyed the additions we have included this year in an attempt to keep members informed and active. The “WHISPERS” email is sent every Friday to keep you informed of what has been happening in the legislature this year. I have had two Zoom sessions on Birds of Arkansas, coordinated with The Audubon Society and President-elect David Cauldwell hosted a series of “coffee hours”. I hope you have enjoyed those sessions.

I am planning other topics to discuss in groups soon. Follow the “whispers” and “Like” and follow our Facebook page for up-to-date information on these sessions. If you have suggestions of subjects you would like to discuss, please feel free to reach out to me at 501-920-1717.

I feel incredibly pleased at our ATRS performance in the Arkansas legislature this year. So far, we have had nothing pass that affects our retirement in a negative manner. Thanks to all the legislators having worked on our behalf. If you know your legislator personally, please thank them for our group. Maintaining strong working relationships with our legislators is very important and we want them to know we appreciate and support them.

Thanks for allowing me to serve as your president of our retirement group this year. I feel honored you have entrusted me with this grave task during these most unusual and trying times. We have maintained membership and for that we should all be grateful.

Emilie Monk

ARTA President

Important Contact Information

Arkansas Retired Teachers Association

Inside Pulaski County: 501-375-2958
Toll Free (Nationwide): 1-888-929-0955
E-mail: office_arta@att.net
www.artanow.com

Arkansas Teacher Retirement System Retirement Benefits and Checks

Inside Pulaski County: 501-682-1517
Toll Free (Nationwide): 1-800-666-2877
E-mail: info@artsr.gov
www.artsr.gov

Arkansas Employee Benefits Division (Health and Life Insurance)

Inside Pulaski County: 501-682-9656
Toll Free (Nationwide): 1-877-815-1017
E-mail: AskEBD@dfa.state.ar.us
www.arbenefits.org

Long Term Care Insurance Cancer/Heart/Stroke Dental & Vision Insurance Medicare Products

Mary Alice Hughes
Lisa Bamberg
501-988-2726
Email: info@ia-office.com
www.ia-office.com

Matt Hughes
479-967-1339
Email: info@matthughesinsurance.com
www.matthughesinsurance.com

Delta Dental Insurance
501-988-2726
www.deltadentalar.com



The INTERLINK is published by
Arkansas Retired Teachers Association
1200 Commerce St Ste 103
Little Rock, AR 72202

Emilie Monk President
David Cauldwell President-Elect
Melanee Yielding Vice President
Cindy Cole Secretary
Donna Morey Executive Director
Tammy Gray Communications
Linda Powell Office Manager

Message from the Executive Director

All Aboard

Happy Spring of 2021! ARTA is so looking forward to the time that our local units, areas, ARTA board and the general membership can have face to face meetings. Even with the vaccines, it will still be quite a while before large groups can safely gather. My church is starting to reopen by limiting the congregation to 60 people with advanced reservations. This has been such a difficult year for all of us and it is still premature to gather in large groups for the next several months. We may have gotten off the roller coaster of the pandemic, only to board the train. My hope is that the light at the end of the tunnel will be sunshine and not an oncoming train.

Thanks to technology, ARTA leaders have been able to watch the Arkansas Legislature and legislative committee meetings virtually. Many contacts with elected officials have been made. Bills that effect the ATRS system were all technical corrections from the System. We have had a group of ARTA activists on Zoom meetings each Monday afternoon to discuss other legislation of interest to members.

President Monk has hosted some special interest Zooms around nature in Arkansas. President-elect Cauldwell led a group on men's issues of interest. We have attempted to engage with members by technology and would love to offer other opportunities. If you would like to suggest or lead a group, let us know. A monthly book club is one example of a possible Zoom.

Many local units have used Zoom through the ARTA account to hold meetings. We encourage locals who can safely gather in a space with a large screen to view a Zoom together. Union County and Franklin County have done this successfully.

The Annual ARTA State Convention will be held by Zoom on May 25 at 10 AM. The ARTA Board of Directors made the decision in February to have the virtual meeting for the safety of all members. The eight ARTA areas will have Zoom meetings in April and May to nominate and elect their members to leadership positions.

We all hope that face to face meetings can resume in the fall with the option for individuals to connect virtually at the same time. This is a positive consequence for the future that allows more members to have opportunities to connect with their local units. Yes, we will have face to face meetings but others can join in via technology. As most of you know, Zoom meetings are accessible by a computer device or by telephone without internet connection.

Please contact the ARTA office with your ideas for how we can better serve the ARTA membership. We love hearing from all of our members, such as Velma Stirling, a retired school secretary over 100 years old who recently called the ARTA office. Each of you are important and needed to share the mission of ARTA with other retired and active public-school employees.

Please be safe, wash your hands, watch your personal space and wear a face covering in public. Stay on the train till we can reach a safe depot.



Donna

When a train goes through a tunnel
and it gets dark, you don't throw
away the ticket and jump off.
You sit still and trust the engineer.

~ Corrie Ten Boom

Welcome New Life Members

Benton County

Rachel B. Baker
Angela Kay White

Carroll County

Diana R. Sturtz

Cleburne County

Glenda Ann Keller
Pam Vaughn

Columbia County

Mary Beth Goodwin

Craighead County

Dotty Burrow
Robin Nichols

Crittenden County

Annette R. Johnson

Faulkner County

Lois Katherine Fulton

Howard County

Deb Tackett

Independence County

Barbara Ann Finley
Elaine Long Vinson

Jefferson County

Christine Bonds

Lonoke County

Deborah Skidmore

Mississippi County

Thelma L. Veach

Pulaski County

Alvena M. Grisson
Elizabeth A. Herring
Mildred A. Hood
Tracy L. Mason
Bernestine Rhodes
Karen G. Worsham

Saline County

Porter Sims

Van Buren County

Tina Kimbrell

Washington County

William R. Epperson
Sheri L. Neil
James D. Paul
Tracy Lynn Reed
Jeanne R. Robson

White County

Trey Reely

Out-of-State

Ngan K. Duong
Gay M. Hensley
Elizabeth A. Pace

Parsons-Burnett Scholarship Grants

The application period for the Parsons-Burnett Scholarship Grants is now open. Active educators in Arkansas's public schools are encouraged to apply.

ARTA members are asked to help promote the availability of the scholarships by sharing this information with others:

- Active educators you know personally
- Local school districts
- Universities in your area or where you are an alumnus or have a relationship
- Your other professional and fraternal organizations
- Local media, including community pages
- Social media

To request a copy of the application guidelines or a sample press release, contact Tammy Gray at tammy_arta@att.net.

The Parsons-Burnett Scholarship Grants are solely funded by contributions from ARTA members and supporters. Those wishing to make a donation to the scholarship fund may do so at any time. Ways that members can contribute include:

- **Individual Donation** via one-time payment
- **Life Continuing Membership**—authorize a monthly deduction from your retirement check in addition to your life membership (#4 on the membership form)
- **Group Donation**—from organization funds or from a special contribution (request, raffle, etc.)
- **Memorial** in honor of a public education retiree or supporter
- **Honorarium** for professional services that were rendered without charge, such as for speakers or presenters at unit meetings.

The link to the application guidelines and form are located on the ARTA web page at www.arta.org/resources.

Applications must be submitted online. The deadline for submissions is June 15, 2021.

Memorials and Donations

NOVEMBER, DECEMBER, JANUARY

Thanks to the thoughtfulness and generosity of individuals and local units, \$1,055 in memorials, honorariums and donations were contributed to ARTA in the last three month period. An additional \$741 contributed by Life Continuing Members makes the total \$1,796.

Your gifts to ARTA, for whatever reason, are greatly appreciated and are a meaningful and substantive part of funding the Parsons—Burnett Scholarship Grants. These scholarships are awarded for educators currently practicing in Arkansas to further their graduate studies.

Clark County RTA

In Memory of:

Gwen Diemer
Wendell Evanson
Dr. Meta Wallace

Faulkner County RTA

In Memory of:

Vernelle Crews
Annette Greenland
JC Merritt

Fulton County RTA

In Memory of:

Lois Jean May

Greene County RTA

In Memory of:

Erie Ellen Sanders
Judy Maureen Rowland

Hempstead County RTA

In Memory of:

Patsy Reece

Independence Co. RTA

In Memory of:

William “Dub” Carlile

Izard County RTA

In Memory of:

Paul Cooper

Little Rock RTA

In Memory of:

Brenda Hipp
Katherine Gibson

Logan County RTA

In Memory of:

Charlotte Davis

Miller County RTA

In Memory of:

Katherine (Katy) Daniel
Frank Rowe

Nevada County RSEA

In Memory of:

Reba House

South Pulaski RTA

In Memory of:

Gloria Nethercutt

Van Buren Co. RT & SE Assn.

In Memory of:

Betty Clark
Peggy McCool

West Central Counties RTA

In Memory of:

Betty Oliver

Yell County RTA

In Memory of:

Al Drittler
Kathryn McCormick
Bobby Rollans

Lloyd Black

In Memory of:

Dr. Paul Fair

Marlene Bush

In Memory of:

Gloria Nethercutt

Continued, next page

From the ARTA Office

As your ARTA office manager, what I normally contribute to the INTERLINK is information. For this issue, I also wanted to share some of what I do and how you can help.

In addition to taking care of the banking for ARTA, I am responsible for keeping the membership database up to date. This includes creating the mailing list, with membership status, for the INTERLINK. (If you received this copy of the newsletter in the mail, you are currently an active member of ARTA.)

Please take a couple of seconds to look at your name on this newsletter. Mine reads: POWELL, LINDA S LC.

What this means is that I am a Life Continuing Member of ARTA. Your name may be followed with CM (you are a Continuing Member), LM (you are a Life Member), LC (you are a Life Continuing member like me) or a number (21, 22 or possibly 23) which means you are an Annual Member whose membership will expire on June 30th of the year indicated.

Every INTERLINK includes a membership form. Annual Members will be reminded to renew or upgrade their membership in June of each year. Right now, **unless you want to make a change in your membership status or update your address**, that form is there for you to share with someone who might be interested in joining ARTA.

As a membership organization, we rely on you even more now during this pandemic to get the word out about ARTA and the work we do for all public-school retirees. As your office manager, I appreciate your assistance in keeping our membership database up to date without duplication. I also thank you for supporting ARTA both by being a member and by helping to share our work with fellow retirees.

Linda Powell

ARTA Office Manager

New Life Continuing Members

Benton County

Brenda J. Smith
David L. Smith

Crittenden County

Ann M. Knight

Van Buren County

Earlene D. Brecheen

Out-of-State

Phyllane C. Johnson

Memorials, *continued*

David Cauldwell

In Memory of:

Sheila Freidenberger
Betty Sutton
Loyd Phillips
Rose Marie Willet

Dr. Diana Glaze

In Memory of:

Dr. Paul Fair

Mary Huie

In Memory of:

Vernelle Crews
Gloria Nethercutt

Ettoyle Mouser

In Memory of:

Dr. Paul Fair
Cheryl Fox
John Hollimon

Ettoyle Mouser

In Memory of:

Judie Jones
Jean Lovelace

Nina Rowe

In Memory of:

Gloria Nethercutt

Steve & Becky Singleton

In Memory of:

Vernelle Crews

Dr. Ella Walker-Rolfe

In Memory of:

Raymond Chambers
Dr. Paul Fair
Gloria Merrick

Bell to Continue with ATRS

Anita Bell will serve another term on the Arkansas Teacher Retirement System Board of Trustees. The 15-member board is responsible for the oversight of the Arkansas Teacher Retirement System.

Ms. Bell joins other ARTA members Danny Knight, Bobby Lester and Lloyd Black on the board. Her term expires June 30, 2027.



Area News

Area II

The **Independence County RTA** continues to hold monthly meetings via Zoom. The meetings include unit business, a short program, and plenty of socializing.

Area III

The **Phillips County RTA** also continues to hold monthly meetings via Zoom. The meetings include fellowship, unit business, and a guest speaker.

Area IV

The **Miller County RTA** has begun holding monthly meetings via Zoom. They are looking forward to resuming in-person meetings in the future.

Area V

The **Chicot County RTA** presented the residents of the Lake Village Rehabilitation and Care Center with caps and socks as part of their annual community service project. President Charles Freeman (right) and Vice President Vertie Staples (left) are pictured below with center employees.



Area VII

The **Rogers RTA** of Benton County held a virtual holiday fundraiser. The \$1140 raised online was delivered to the NWA Food Bank.

Area VIII

The **Retired Educators of Little Rock** have continued to hold monthly meetings via Zoom. Programs have consisted of guests speakers and entertainment provided by members.

The **Little Rock Retired Teachers** also continue to hold monthly meetings via Zoom. They are most proud of the community service they have continued to provide during the pandemic. Members Darryl Newcomb and Janice Botner (below) delivered the 64 boxes, 18 books and 405 masks that were assembled for the project.



Submit your photos, news and story ideas
by April 30 for inclusion in
the next issue of this newsletter.

In Memoriam, *continued*

Out of State

Judith A. Harrell
Elizabeth A. Hippias
Jane G. Jackson
Mary E. Johnson
Benjamin G. Jones

Donald D. Jordan
Howell W. Keeter
Mary A. Kimbrough
Linda L. Kinard
Joyce A. Lefevre
Carrie I. Mabrey

Robert L. Matteo
Marjorie M. McAllister
Jane E. McHugh
Gladys E. Meekins
Loretta F. Meeks
Bobby Moore
Clara M. Nelson

Bruce A. Pepper
Lola J. Porter
Glenda R. Roberts
Donna J. Rodery
Frank A. Rowe
Vicki L. Sanders
Truella S. Shaw

Mathew R. Stewart
Wanda L. Stewart
Billye G. Townsend
Delois Warren
Claudie Watson
Shirley A. Wilson
Alma J. Wolf

An Artist's Retrospective of 2020

ARTA member Mary Ann Stafford spent 2020 creating works of art, much as she has done since her retirement from education in 1993. Dr. Stafford enjoys working with watercolor, pastel and acrylic, as shown in the following examples.



"The Brothers"

Acrylic on 24"x30"x1" wrapped canvas. Unframed, the edges are painted to continue the tones.

It won a 3rd place in the landscape category at a recent ALA exhibit.



"Spice"

Pastel on 12"x16" self-prepared black gessoed support. Unframed.



"Mishmash"

Watercolor, 19"x23. Framed.

Submitted for use as a mask design.

Greeting Card

Example of a hand-painted greeting card sent to hospice patients. Personal message of comfort included by the artist.



To view Mary Ann's complete 2021 retrospective visit www.pastelanne.wordpress.com.

Dr. Stafford teaches drawing and pastel at the Maumelle Senior Wellness Center and recently retired as faculty member at the Arkansas Arts Center.

To learn more about the artist and her work, visit www.staffordart.com.

Due to COVID 19, we do not anticipate traveling much through 2021.

Many countries are denying entry to travelers from the United States or requiring a quarantine period once the travelers enter their countries. This adds so much time and expense to the trip and does not make for the great experience that ARTA travelers have come to expect.

The Arkansas Democrat Gazette had an article titled “Even with vaccines, travel planning this year remains complicated” dated March 16, 2021. In the article, Bill Jirsa, Georgetown, Texas is quoted as saying, “We’re just not comfortable with the current situation. Nobody can tell us that we can’t carry the virus and give it to someone else: no one knows for sure what the shots do with these new variants. Nobody likes the unknown. So how can you plan when there’s so much you can’t plan for?”

As of now, the following trips are still on: Canadian Rockies & Glacier National Parks, Autumn in Vermont, Classic Danube River Cruise, Heritage of America and Nashville & The Smoky Mountains. Collette decides 30 days prior to departure if trips will not be allowed to continue. We will contact you if a trip is cancelled or changed, and you will be offered a full refund or the option to transfer your reservation.

Mary Huie retired in 2020. Donna Morey is the current travel contact. She will contact those who have booked a trip if there are changes or cancellations. You can also contact her at the ARTA office at 501-375-2958 or by email at donna_arta@att.net.

Suggestions for future trips are welcome at any time.

Watch for the next INTERLINK, when we hope to have many travel opportunities once again planned for 2022.

*Some of the world’s best people
travel with ARTA!!*

2021 Travel Opportunities

The Canadian Rockies & Glacier National Park

August 7—13, 2021

Ice fields, rushing waterfalls, glacial peaks, and towering summits are just a few of the wonders awaiting you in the Canadian Rockies and Glacier National Park. Visit Head-Smashed-In Buffalo Jump, a UNESCO World Heritage site and one of the world’s oldest, best preserved buffalo jumps. Ride aboard a Jammer (open-air touring car) during a visit to Glacier National Park. Journey along the unforgettable Icefields Parkway. Stop at Athabasca Glacier and choose to ride across this mass of glacier ice or take a walk on the glass bottom platform at the Glacier Skywalk. Explore Bow Falls and Surprise Corner. Visit the incomparable Chateau Lake Louise. Get ready for an adventure that brings together the expanse of the prairies, the majesty of the Canadian Rockies, and Montana’s Glacier National Park. **Booking Closed—Call for availability**

Autumn in Vermont featuring Lake Champlain and the Adirondacks

October 1—7, 2021

Discover Vermont’s winding roads lined with autumn foliage and cozy towns with an eclectic spirit. Experience the quintessential New England town of Woodstock. Enjoy a 3-night stay in the youthful, artsy hub of Burlington. Step into the past at the Shelburne Museum, a sprawling campus of nearly 40 buildings dedicated to art and Americana. Feel the past come alive at Fort Ticonderoga, where 18th-century artillery lines the outer walls and actors go through a soldier’s daily tasks. Connect with the local community in the Mad River Valley. Stop at Hildene, the former home of Robert Todd Lincoln, past Chairman of the Pullman Company and son of Abraham and Mary Todd Lincoln. On a colorful journey through the “Green Mountain State,” find local artisans, tasty treats, and an age-old history in New England. **Booking Closed—Call for availability**

Classic Danube featuring 7-night River Cruise

October 3—13, 2021

The Danube River is the second largest river in Europe. At 1,770 miles in length, this mighty waterway carves its way through a total of ten European countries. Join us as we take you on a lovely cruise along the Wachau Valley region, the most breathtaking area of the Danube. You will see a dramatic shoreline complete with lofty hills, hilltop castles and charming villages nestled between flourishing vineyards. Highlights include Bratislava, Vienna, Linz, Passau, Regensburg, Munich, Seefeld, Linderhof Palace and Oberammergau, renowned for the Passion Play. **Booking Closed—Call for availability**



Heritage of America

October 24—November 1, 2021

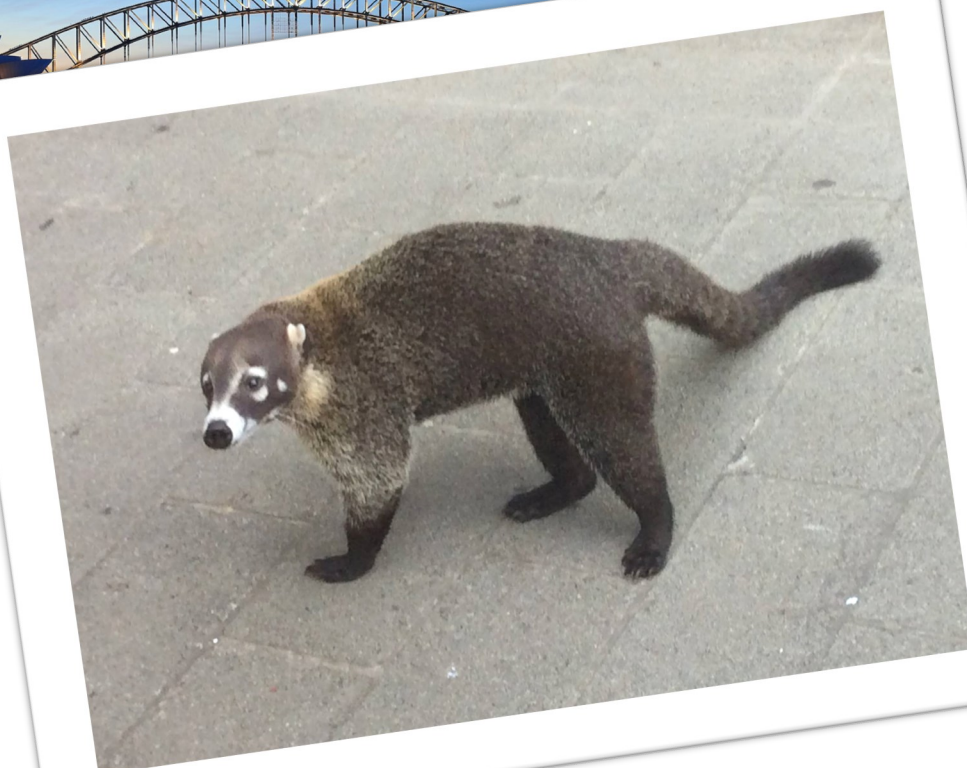
Follow the epic story of American democracy. First stop, Philadelphia, to view the Liberty Bell and see Independence Hall. Walk the battlefield at Gettysburg and tour the National Military Park & Museum. Stop in quaint Harper's Ferry, before taking in the amazing views of the Shenandoah Valley. Visit the beautiful home and gardens of Jefferson's Monticello. Arrive in Colonial Williamsburg and tour some of the 88 restored historic buildings and dine in a traditional tavern. Explore the treasures of the Smithsonian Institution with your choice of visiting the National Air and Space Museum or the National Museum of American History. Visit Mount Vernon, the beloved home of George Washington. A tour of Washington D.C. includes the White House Visitor Center and stops at the moving World War II Memorial, the Vietnam Veterans Memorial and the Korean War Memorial. Visit Arlington National Cemetery. **Save \$200 pp—Book by April 24, 2021**

Nashville & The Smoky Mountains Holiday

December 1—8, 2021

Take in the sights and sounds of the holidays in Nashville, Gatlinburg and Asheville. Enjoy reserved seats at the Grand Ole Opry in Nashville. Tour historic RCA Studio B and the Country Music Hall of Fame. Experience a magical holiday dinner and show at the Opryland Resort. Choose a horse-drawn carriage ride or a Grand Ole Opry Resort's Delta River cruise to marvel at the holiday lights and décor. In Gatlinburg, relax and tap your toes during Dolly Parton's Christmas Stampede and Dinner Show. Explore the natural wonders of Great Smoky Mountains National Park by day and marvel at the spectacular light displays and shows celebrating the spirit of the holidays at Dollywood. Then, travel to Asheville, North Carolina, and enjoy the city's historic architecture, engaging neighborhoods and robust arts districts. Tour the Biltmore Estate, elaborately adorned for the holidays.

Book by May 25, 2021



Wish
You
Were
Here

In Memoriam

Arkansas County

Mary C. Boley
Bobby G. Flanagan
Johnny M. Purdy

Ashley County

Carolyn S. Harris
Linda K. Harville
Norma B. Lawrence
Rava L. Reed

Baxter County

Gordon D. Addington
Bobby D. Hulse

Benton County

Melvin R. Cambron
Verna L. Dodd
Sheila Freidenberger
Juanita M. Fryer
Billie A. Furlow
Mae E. Hickman
Gina M. Kell
Hazel I. Layton
Brenda S. Mask
Loretta I. Millsap
Maurice L. Moore, Jr.
Jean M. Pendergraft
Jacqueline Rozell
Susan J. Stewart
Norma C. Sumalinog
Allie R. Vastine
Johnny T. Webb
Vickey D. Wilber
Rose M. Willett

Boone County

Deborah L. Kelley
Jerry Wheaton
Diana N. Young

Bradley County

Sharon J. Braswell
Lucille Cherry
Russell Isbell

Carroll County

Catherine A. Dorsey
Frankie L. Robinson
Archie C. Swofford

Chicot County

Joyce J. McCree
Gail M. Robinson
Betty L. Simpson

Clark County

Jasper R. Benton
Wendell O. Evanson
Sandra K. Matthews
Barbara S. McAfee

Clark County

Billie J. Miller
Norma J. Todd
Helen L. Vowan

Clay County

Lendall L. Vannada

Cleburne County

Gary F. Nipper

Columbia County

Edward E. Bailey, Jr.
Ida M. Burton
Julius C. Phillips
Betty L. Ramsey
James W. Rowe, Jr.
Meta S. Wallace

Conway County

Joye B. Beeson
Raymond Chambers
Doris J. Flowers
Donna L. Hardin
Muriel Hester
Charles F. Sharp

Craighead County

Jerry W. Austin
Tacey L. Cravens
Glenda B. Culpepper
Janis G. Davis
Glenvell D. Fletcher
Ladohna L. Freeman
Ola Kirk
Mary M. McRaven
Robert L. Pratt
Martha A. Prince
John J. Rankin
Dorothea E. Roden
Nadine Runsick
Betty L. Watkins
Jimmy H. Wilson

Crawford County

Jo E. Chotard
Ernest W. Cole
Johnnie W. Ewing
James D. Herndon
Helen M. Morris
Billy W. Pierce

Crittenden County

Melvin. Bowles
Christine Grayson
Marilyn Mathis
Dennis E. Peronia
Richard J. Rogaisis

Cross County

Catharyn H. Hagler
Thomas M. Hamrick
Pamella G. Martin
Teresa L. Rolland

Dallas County

Gwen P. Diemer
Glenda F. Fleming
Brenda K. Ford
Calvin Martin
Lanell H. Rowe

Desha County

Jack H. May
Jimmy W. McGehee

Drew County

Letty R. Burton
Norma M. Fletcher
Linda J. Joyner
Paula R. Pack
Lillie M. Pharr

Faulkner County

Eva W. Ayres
Sandra G. Black
Hilda A. Brady
Arletris Cornett
Vernelle Crews
Edward L. Dow
Peggy B. McCool
Margaret G. Rainey
Ruby B. Robinette
Betty R. Shapter
Mary L. Shepherd
John W. Thessing
Lockie C. Vaughan
Sharon L. Washum
George R. Yarbrough

Fulton County

Lois J. May
Therman D. Smith
W.F. Statler

Garland County

Ronald F. Ball
Marshall P. Graves
Robbie D. Hancock
Patricia A. Hines
Tommy A. Hunter
Sandra C. Jones
Clinton J. Kemp
Glenna F. Loudermilk
Raymond D. Mace
Nathalie A. Martin
Ralph R. Ramsey, Jr.
Maria A. Ugartechea
Charles R. White

Garland County

Estelle Wooten

Grant County

Rachel M. Anderson
Bonnie M. Gates

Greene County

Connie J. Adams
Pamela D. Ashley
Connie R. Baine
Rex R. Blackwood
Linda C. Parten
Judy M. Rowland
Erie E. Sanders

Hempstead County

Barbara A. Jackson
Gloria G. Merrick
Faye N. Miner
Patsy J. Reece
Janey L. Wray

Hot Spring County

Twyla F. Bailey
Elizabeth Chastain
Zelma M. Jones
Mattie Nolen
Marilyn M. Thomas
Stanley G. Whitlow
Ronald L. Wright
Carole J. Yarbrough

Howard County

Betty R. Feemster
Sherry L. Goodrum
Patsy J. West

Independence County

Delbert H. Brickey
Amy S. Fairchild
Veda R. Hill
Glen E. Rutledge

Izard County

Martha M. Berryhill
James A. Frizzell, Jr.
Peggy J. Seay

Jackson County

Ermyl E. Pearl
Cora I. Vest

Jefferson County

Mildred A. Chavis
Charles R. Cobbs
Ellen S. Dougan
Patricia M. Everett
Kathy L. Houston
Oreatha Jones
Fore Norman, Jr.

Jefferson County

Marion L. McLarty
Daisy L. O'Neal
Cortez. Smith, Jr.
Jeanette Vallun
Ola F. Veazey
Elmer J. Weith

Johnson County

Burley B. King
Geraldine Stepp
Gerald C. Webb

Charlotte G. Gilmer
Martin N. Herman, Jr.

Lawrence County

Margaret A. King
William W. McCurley
Glynda J. Stewart
William O. Watson

Lincoln County

Louella Lee
Jeffery P. Wilkerson

Little River County

Maralynn E. Grose
Bettie J. Walton

Logan County

Charlotte A. Davis
Maggie M. Graves
Tana C. Kirchner
Emma J. Parish

Lonoke County

Josephine M. Beaty
Elizabeth Branham
Linda Buffalo
Jack C. Carrington
Fe G. Deller
Alma F. Fry
Bobbie J. Haney
Constance J. Hardin
Alma J. Kimbrough
Roland E. Launius
William C. Rains
Linda D. Schwalm
Linda L. Smothers
Linda Wells

Madison County

Lonnie C. Roach

Miller County

Charlsie P. Martin
Lewis F. Whistle

Continued, page 11

Mississippi County

Patricia Henderson
Mary L. Maxwell
Julia N. Moore
Claudia Thompson
Frances G. Wilson

Monroe County

Jimmy R. Hynum
Verna S. Wilkison
Sherrin A. Wilson

Montgomery County

Sue Wilson

Nevada County

Reba N. House
Mary E. Martin

Ouachita County

Mary D. Bever
Melanie G. Doss
Mary E. Griffith
Opaline M. Martin
Jo R. Rixse
Francine Worthen

Perry County

Loraine Jackson
Joyce L. Lee

Phillips County

Pearlean B. Britton
Linda L. Doddridge
Patricia F. Gibbs
Michelle L. Hunter
Bobbie J. Morrow
Edward L. Phillips
Jerdean N. Sullivan
Alene F. Valentine
Barbara A. Williams

Pike County

Kenneth V. Teeter

Poinsett County

Geraldine L. Crews
Juanita F. Gooch
Richard E. Lane
Joan Rutherford

Polk County

James F. Golden

Pope County

Jasper E. Bradshaw
Janice K. Conley
Frank J. Dickerson, Jr.
Bruce. Dickey
Alvin W. Drittler
John L. Harrison

Pope County

John E. Johnston
Paul R. Leggett
Patricia J. Miller
Elizabeth S. Rickard
Mittie P. Small
Carolyn S. White
Dorothy Wright

Prairie County

Faye B. Patterson
Bonnie F. Reid

Pulaski County

Blossie M. Bailey
Robbie M. Bell
Sandra K. Booth
James A. Brown
Jacquelyn Bruce
Charles A. Burks
Ann G. Butler
Charles E. Clark, Jr.
Delilah Cleaver
Dick B. Clough
Raymond P. Cody
Margie E. Combee
Stanley A. Cotton
Louise J. Craft
Mary A. Cunningham
Jerry C. Daniel
Bonnie S. Davis
Debra E. Del Real
Phyllis A. Downing
Edward A. Duncan
James E. Eades
Paul R. Fair
Katherine D. Gipson
Justine M. Green
Charles A. Grisham
Mary L. Harris
Billie J. Haymes
Dewane L. Hendrix
Hettie M. Hofherr
Charles E. Holloway
Wanda L. Horne
Randy Hughes
Irene B. Johnson
Jessie L. Joyner
Mary K. Keogh
Jeanne B. Lagrossa
Carolyn Landers
Marianne P. Lockard
Evelyn A. Long
Jerry T. Marks
Martha L. McNeal
Maretha P. Mitchell
Peggy L. Nabors

Pulaski County

Gloria L. Nethercutt
Reyda M. Odell
Betty J. Oliver
Georgia M. O'Neal
James E. Powell
Jack Price
Mose Randall
Vernice B. Rice
Patti J. Sacrey
Grace B. Shearer
Raymond L. Shoptaw
Delwin H. Smith
Hazel B. Smith
Mary A. Smith
Toni D. Sullivan
Essie V. Tappin
Harold E. Thomas
Lee C. Thompson
Carolyn S. Toney
William A. Tucker
Willie H. Turner
Willie H. Vincent
Rhonda L. Wagon
Pamela K. White
Ida L. Whiteside
Donna B. Williams
Mary R. Witcher
Laura J. Young
Gladys C. Young

Saline County

Janice E. Anderson
Ronald K. Briggs
Terry G. Draper
Janet P. Farmin
Raymond A. Pittman
Jerry T. Raper
Betty C. Rosenberger
Vonda K. Russell
Patsy J. Sample
Wanda G. Smith
Le V. Truong
Sharon E. Wieser
Mary N. Williams
Ann Wilsey

Scott County

Mary S. Harrison
Judy C. Knapp
Janet D. Scott
Karen E. Steelgrave
Ronald D. Williams

Sebastian County

Darrel E. Baker
Carolyn S. Blansett

Sebastian County

Shelley L. Furlow
Alice J. Guinn
Joy J. McPherson
William H. Murray
Delores G. Richardson
Seigal E. Rogers
Benita C. Siebenmorgen
Davie B. Slates
Alfred J. Sotorske
Gloria M. Vesa
Shirley L. White

Sevier County

Kenneth D. Phillips
Dorothy G. Williams

Sharp County

Janna L. Freeman
Paul W. Johnson
Glenda J. Ward

St. Francis County

Dean E. Davis
Willie A. Ferguson, Jr.

Stone County

Mildred E. Balentine
Earline W. Johnson

Union County

Marie A. Lewis
Donna W. McCoy
Earline Robinson
Debra K. Slaughter

Van Buren County

Betty S. Clark
Mattie A. Thornton

Washington County

John D. Barnett
Phyllis D. Clark
Audrey M. Clinehens
Jacques S. Draznszak
Juanita B. Duncan
Eleanor B. Frank
Mark L. Gish
William J. Hamilton
Roy C. Hummel
Joyce A. McCone
Mary L. Newport
Claud V. Perry
Lloyd W. Phillips
Virginia W. Reed
Norman D. Sisemore
Glenda E. Snaveley
Stephen S. Springer
Tennie M. Vickers

Washington County

Patricia J. Waldren
Janet B. Watkins
Melba J. Watts
Stanley O. Wilson

White County

Edith R. Barnes
Sharon A. Brackenridge
Carol L. Brown
Brenda F. Chism
James C. Eason, Jr.
Pamela R. Hicks
Charlotte L. Hughes
James D. Maleare
Martha S. Oliver
John W. Powell
Ruby L. Turner
Noble T. Warren

Woodruff County

Ruth A. Hicks

Yell County

James R. Colbert
Kathryn R. McCormick
Kenneth R. Powell
Bobby L. Rollans
Enrique T. Tabyanan

Out of State

Carol D. Baker
Thad G. Beasley
Mary P. Bowen
Abraham Broom
Marvin H. Brown
Sandra R. Bubrig
Jewel G. Butler
Charles R. Campbell
Frankie E. Casey
Edith K. Chaffin
Betty J. Choate
Alma M. Clemmer
Alfred L. Conniff
Jane W. Cote
Jo A. Curry
Ruby H. Daniels
Owen R. Davis
Katholeen R. Doshier
Barbara S. Durham
Terry W. Evans
Glenda B. Fowler
Harvey D. French
Dorothy D. Geater
Nell A. Gibson
Novyle J. Grimes

Continued, page 6



Arkansas Retired Teachers Association
1200 Commerce St Ste 103 · Little Rock, AR 72202

PRSRT STD
U.S. POSTAGE
PAID
Permit No. 225
Little Rock, AR

Membership Key

Your membership type follows your name on the address portion at right:

Annual Member—number shows the expiration date of membership

Continuing Member—CM

Life Member—LM

Life Continuing—LC



Address changes and corrections: office_arta@att.net or 501-375-2958

Arkansas Retired Teachers Association Membership Form

Act 105 of 1985 authorizes the Arkansas Teacher Retirement System to deduct your ARTA dues from your monthly benefit check with your permission. Such authorization may be canceled only by a written notice from you to the retirement system. Please select one of the following options, sign and return this form to ARTA for processing.

Return form ONLY if you are not currently an ARTA member OR if you wish to make a change.

1. ☐ I elect to have \$2 per month deducted from my benefit check for ARTA dues (CONTINUING MEMBER, CM)
2. ☐ I elect to have \$20 deducted from my benefit check for 12 months (Total \$240—LIFE MEMBER, LM)
3. ☐ One-time payment enclosed (Check for \$240—LIFE MEMBER, LM)
4. ☐ I am a Life Member AND elect to have \$2 per month deducted from my benefit check for the Parsons-Burnett Grant.
(LIFE CONTINUING MEMBER, LC)
5. ☐ Renewal payment of \$36 enclosed (ANNUAL MEMBER, July 1—June 30)

Name _____ Signature _____

Address _____ Telephone _____

City/State/Zip _____

County _____ Social Security Number (last four digits only) _____

Email _____ Date _____

Send completed form and applicable payment to: **ARTA Membership, 1200 Commerce Street Ste. 103, Little Rock, AR 72202**